



# Contribution of Zinc Solubilizing Bacteria in Growth Promotion and Zinc Content of Wheat

Sana Kamran<sup>1</sup>, Izzah Shahid<sup>1</sup>, Deeba N. Baig<sup>1</sup>, Muhammad Rizwan<sup>2</sup>, Kauser A. Malik<sup>1</sup> and Samina Mehnaz<sup>1\*</sup>

<sup>1</sup> Department of Biological Sciences, Forman Christian College (A Chartered University), Lahore, Pakistan, <sup>2</sup> Department of Chemistry, Government College Township, Lahore, Pakistan

## OPEN ACCESS

### Edited by:

Giuseppe Colla,  
Università degli Studi della Tuscia, Italy

### Reviewed by:

Jay Prakash Verma,  
Banaras Hindu University, India  
Mohammad Oves,  
King Abdulaziz University, Saudi Arabia

### \*Correspondence:

Samina Mehnaz  
saminamehnaz@fccollege.edu.pk

### Specialty section:

This article was submitted to  
Plant Microbe Interactions,  
a section of the journal  
Frontiers in Microbiology

**Received:** 21 October 2017

**Accepted:** 12 December 2017

**Published:** 21 December 2017

### Citation:

Kamran S, Shahid I, Baig DN,  
Rizwan M, Malik KA and Mehnaz S  
(2017) Contribution of Zinc Solubilizing  
Bacteria in Growth Promotion and  
Zinc Content of Wheat.  
*Front. Microbiol.* 8:2593.  
doi: 10.3389/fmicb.2017.02593

Zinc is an imperative micronutrient required for optimum plant growth. Zinc solubilizing bacteria are potential alternatives for zinc supplementation and convert applied inorganic zinc to available forms. This study was conducted to screen zinc solubilizing rhizobacteria isolated from wheat and sugarcane, and to analyze their effect on wheat growth and development. Fourteen exo-polysaccharides producing bacterial isolates of wheat were identified and characterized biochemically as well as on the basis of 16S rRNA gene sequences. Along these, 10 identified sugarcane isolates were also screened for zinc solubilizing ability on five different insoluble zinc sources. Out of 24, five strains, i.e., EPS 1 (*Pseudomonas fragi*), EPS 6 (*Pantoea dispersa*), EPS 13 (*Pantoea agglomerans*), PBS 2 (*E. cloacae*) and LHRW1 (*Rhizobium* sp.) were selected (based on their zinc solubilizing and PGP activities) for pot scale plant experiments. ZnCO<sub>3</sub> was used as zinc source and wheat seedlings were inoculated with these five strains, individually, to assess their effect on plant growth and development. The effect on plants was analyzed based on growth parameters and quantifying zinc content of shoot, root and grains using atomic absorption spectroscopy. Plant experiment was performed in two sets. For first set of plant experiments (harvested after 1 month), maximum shoot and root dry weights and shoot lengths were noted for the plants inoculated with *Rhizobium* sp. (LHRW1) while *E. cloacae* (PBS 2) increased both shoot and root lengths. Highest zinc content was found in shoots of *E. cloacae* (PBS 2) and in roots of *P. agglomerans* (EPS 13) followed by zinc supplemented control. For second set of plant experiment, when plants were harvested after three months, *Pantoea dispersa* (EPS 6), *P. agglomerans* (EPS 13) and *E. cloacae* (PBS 2) significantly increased shoot dry weights. However, significant increase in root dry weights and maximum zinc content was recorded for *Pseudomonas fragi* (EPS 1) inoculated plants, isolated from wheat rhizosphere. While maximum zinc content for roots was quantified in the control plants indicating the plant's inability to transport zinc to grains, supporting accelerated bioavailability of zinc to plant grains with zinc solubilizing rhizobacteria.

**Keywords:** PGPR, zinc solubilization, atomic absorption spectroscopy, zinc quantification, grain zinc content, exopolysaccharides

## INTRODUCTION

Despite the growing industrial and technological advancement, agriculture is still the most significant sector of Pakistan, contributing one-fifth of the total GDP. Wheat is considered to be one of the chief food crops in Pakistan, contributing 10.3% to the agricultural sector and having annual production of 25.3 million tons, calculated in 2013–2014 (Mirza et al., 2015). Zinc, one of the domineering micronutrients, is required in small amount for the proper growth and development of living organisms (Hafeez et al., 2013). In plants, specifically, it is involved in carbohydrate metabolism (Alloway, 2008), auxin metabolism (Alloway, 2004) and acts as a significant anti-oxidant. Zn-finger transcription factors play an important role in the normal development of floral tissues, flowering, fertilization and fruiting (Epstein and Bloom, 2005). Zinc deficiency in plants leads to retarded shoot growth, chlorosis, reduced leaf size (Alloway, 2004), susceptibility to heat, light and fungal infections, as well as affects grain yield, pollen formation, root development, water uptake and transport (Tavallali et al., 2010). Zinc deficiency in wheat leads to yellowing of leaves and stunted growth. Consuming zinc deficient wheat can lead to zinc deficiency in humans as well.

Plants can uptake zinc as divalent cation (Kabata-Pendias and Pendias, 2001) but only a very minor portion of total zinc is present in soil solution as soluble form. Rest of the zinc is in the form of insoluble complexes and minerals (Alloway, 2008). Due to unavailability of zinc in soil, zinc deficiency occurs which is one of the most widespread micronutrient deficiency. To alleviate zinc deficiency, various methods have been applied since long. Zinc fertilizers in the form of zinc sulfate (White and Broadly, 2005) or Zn-EDTA (Karak et al., 2005) have been used, but their usage puts an economical and environmental pressure and these are transformed into insoluble complex forms within 7 days of fertilizer application (Rattan and Shukla, 1991). Regular crop rotation and intercropping has been used in various areas (Gunes et al., 2007; Zuo and Zhang, 2009) to promote zinc uptake by plants. Other methods include conventional breeding (Cakmak et al., 2010), transgenic approaches and genetic engineering (Gustin et al., 2009; Mhatre et al., 2011; Tan et al., 2015). However, these approaches are expensive, laborious and slower. A better alternative to all these approaches is the use of zinc solubilizing rhizobacteria.

Plant growth promoting rhizobacteria (PGPR) are soil borne bacteria that colonize the rhizosphere, multiply and compete with other bacteria to promote plant growth (Kloepper and Okon, 1994). PGPR promote plant growth either by solubilizing and assisting nutrient acquisition or by releasing phytohormones or biocontrol agents to protect plant from various pathogens (Glick, 2012). Various PGPR have found to be effective zinc solubilizers. These bacteria improve the plant growth and development by colonizing the rhizosphere and by solubilizing complex zinc compounds into simpler ones, thus making zinc available to the plants.

Zinc solubilizing microorganisms solubilize zinc through various mechanisms, one of which is acidification. These microbes produce organic acids in soil which sequester the zinc

and decrease the pH of the nearby soil (Alexander, 1997). Moreover, the anions can also chelate zinc and enhance zinc solubility (Jones and Darrah, 1994). Other mechanisms possibly involved in zinc solubilization include production of *siderophores* (Saravanan et al., 2011) and proton, oxidoreductive systems on cell membranes and chelated ligands (Wakatsuki, 1995; Chang et al., 2005). Various PGPR have shown enhanced growth and zinc content when inoculated in plants. These include *Pseudomonas*, *Rhizobium* strains (Deepak et al., 2013; Naz et al., 2016), *Bacillus aryabhatai* (Ramesh et al., 2014), *Bacillus* sp. (Hussain et al., 2015), and *Azospirillum*. Bacterial strains that have been reported to show zinc solubilization on lab scale include *Pseudomonas aeruginosa* (Fasim et al., 2002), *Gluconacetobacter diazotrophicus* (Saravanan et al., 2007), *Bacillus* sp., *Pseudomonas striata*, *Pseudomonas fluorescence*, *Burkholderia cenocepacia* (Pawar et al., 2015), *Serratia liquefaciens*, *S. marcescens*, and *Bacillus thuringiensis* (Abaid-Ullah et al., 2015). Prospective zinc solubilizing bacteria for enhanced nutrition and zinc uptake in *Zea mays* L., zinc solubilizing *Bacillus* strains that modulate growth, yield and zinc biofortification of soybean and wheat have also been characterized by researchers (Khande et al., 2017). These strains have been reported for increasing zinc content of straw and grains in soybean and wheat, enhancing food efficacy and coping with zinc deficiency. Vaid et al. (2014) have reported rice growth promotion and 42.7% increased zinc nutrition of grains when inoculated with zinc solubilizing bacteria.

Keeping in view the above facts, this study was designed to identify and characterize pre-isolated bacteria from wheat and sugarcane for plant growth promoting (PGP) abilities, zinc solubilizing ability using plate assays and to evaluate the contribution (if any), of zinc solubilizing strains on growth and zinc content of wheat plants, through pot experiments.

## MATERIALS AND METHODS

### Bacterial Isolates

In this study, 14 un-identified exopolysaccharide (EPS) producing bacterial isolates, previously isolated from wheat (Mehnaz, unpublished) and 10 identified strains from sugarcane: PBS1, PBS2, QS2, QST-W1, LHR-Sterilized, LHST-IN-W1, LHR-W1, LHR-W2, LS1-a, and LS1-b (Mehnaz et al., 2010) were used and maintained on LB agar plates (Bertani, 1952) at 28°C. Colony morphology of these isolates was observed on LB agar and RCV-sucrose agar media (Weaver et al., 1975) by incubating at 28°C for 24–48 h.

### Biochemical and Molecular Characterization of Bacterial Isolates

Gram staining of the unidentified wheat isolates was performed using the standard procedure described by Vincent (1970) and biochemical tests were performed using bacterial miniaturized identification kits QTS-24 (DESTO Laboratories, Karachi, Pakistan) following manufacturer's instructions.

Genomic DNA of unidentified isolates was extracted using Genomic DNA purification kit (ThermoScientific™ GeneJET™ USA). 16S rRNA gene for each bacterial isolate was amplified in 50 µl reaction mixture containing 25 µl of PCR Dream *Taq* master mix; *Taq* DNA polymerase (0.05 U/µl), reaction buffer, MgCl<sub>2</sub> (4 mM) and dNTPs, 0.4 mM each (Thermo Fisher Scientific, USA; Catalog Number: EP0701), 5 µl template DNA, 12 µl diH<sub>2</sub>O and 8 µl of 20 pmol P15 (5'-CGGGATCCAGAGTCAGAACGAACGCT-3' and P65- 5'CGGGATCCTACGGACGACTTCACCCC-3') universal primers (Tan et al., 1997). Initial denaturation was provided at 94°C for 2 min following 35 cycles of 94°C for 1 min, 55°C for 1 min, 72°C for 3 min and final extension at 72°C for 10 min (Chun and Goodfellow, 1995). The amplified (1.5 kb) 16S rRNA gene products were analyzed using gel electrophoresis by running DNA on 1% agarose gel at 90 V for 40–50 min. and concentration was determined by Nanodrop UV spectrophotometer (ThermoScientific, USA; Model no: E4-106-50-0001-S). Gene products were purified with PCR Purification Kit (Thermo Fisher Scientific, USA), commercially sequenced (Eurofins, Germany) and sequences were BLAST (Basic Local Alignment Search Tool) for homology.

Multiple Sequence alignment of all bacterial isolates was carried out using CLUSTALW (ver. 1.83). *Planctomycete* was used as out-group to construct Phylogenetic Tree and evolutionary history was created using neighbor-joining method. Percentage of replicate trees in which associated taxa clustered together in the bootstrap test (1,000 replicates) are shown next to the branches. The evolutionary distances were calculated using the maximum composite likelihood method and were in the units of number of base substitutions per site. All positions containing gaps and missing data were eliminated from the dataset using the complete deletion option. There were a total of 1,408 positions in the final dataset. Phylogenetic analysis was conducted with MEGA4 software. These sequences were deposited in the GenBank database and accession numbers were obtained (i.e., KY848812 to KY848824 and MF150305).

## Plant Growth Promoting (PGP) Ability Assays

### Indole-3- Acetic Acid (IAA) Production Assay

Single bacterial colonies of individual strains were inoculated in 100 ml LB broth containing 0.1% L-tryptophan as a precursor for IAA production and incubated at 120 rpm, 28°C for 7 days. Qualitative assessment was done by harvesting cells from 500 µl culture in sterile eppendorf tubes at 10,000 rpm for 10 min and adding 1 ml Salkowski's reagent (Gordon and Weber, 1950) in supernatant. Samples were kept in dark for 15–20 min to observe color change.

For quantitative assessment, cells from 7 days old, 100 ml bacterial culture grown in LB with 0.1% L-tryptophan, were harvested at 10,000 rpm for 15–20 min. The pH of the supernatant was adjusted at 2.8 using hydrochloric acid and it was extracted twice with equal volumes of ethyl acetate (Tien et al., 1979) following evaporation using rotary evaporator

and was resuspended in 1 ml methanol. The samples were analyzed by high-performance liquid chromatography (HPLC) on Waters HPLC System (e2995, separations module) with 2998 photodiode-array (PDA) detector using a Nucleosil C18 column (4.6 × 250 mm, 5 µM; Macherey-Nagel, Germany). The mobile phase was a mixture of methanol/acetic acid/water (30:1:70, v/v/v) and the flow rate was adjusted at 1.2 ml/min (Rasul et al., 1998). Pure indole-3-acetic acid (Sigma) was used to prepare standard solutions.

### Siderophore and Hydrocyanic Acid (HCN) Production Assay

For qualitative assessment of siderophore production, O-CAS method as described by Perez-Miranda et al. (2007) was used. Each bacterial culture was spot inoculated on LB agar plate and incubated at 28°C for 1–2 days. CAS medium was prepared as described by Schwyn and Neilands (1987). PIPES buffer medium and CAS dye solution were mixed and applied to 48 h grown bacterial cultures, as overlay. The plates were kept at 28°C for 20 min to 24 h.

Qualitative production of HCN was determined by streaking bacterial colonies on LB agar plates. Filter papers dipped in alkaline picrate solution (0.25% picric acid and 1.25% sodium carbonate) were placed on the lids of petri plates (Miller and Higgins, 1970), sealed with parafilm and incubated at 28°C for 4–5 days.

### Extracellular Enzyme Assays

Overnight grown bacterial cultures were transferred aseptically by spot inoculation on 1% Tween-20 LB agar plates to detect lipase production (Sierra, 1957). National Botanical Research Institute's Phosphate Growth medium (NBRIP; Nautiyal, 1999) plates were used for detection of P solubilization ability by isolates. LB agar plates supplemented with 1% carboxymethyl cellulose (CMC) for cellulase production (Lin et al., 2012) and skim milk agar plates (Kumar et al., 2005), were used to detect the production of proteases. Fresh bacterial cultures were spot inoculated and the plates were incubated at 28°C for 3–4 days for lipase and protease and 14 days for phosphatase production ability. Clear zones around colonies indicated respective activity. For cellulase, plates were stained with 0.1% congo red for 15 min, following de-staining (1M NaCl for 15 min). Formation of yellowish zones around bacterial growth indicated positive results.

### In Vitro Zinc Solubilization Assessment Using Plate Assay

All bacterial strains were screened for their zinc solubilizing ability for five insoluble zinc compounds viz. zinc sulfate (ZnSO<sub>4</sub>), zinc oxide (ZnO), zinc chloride (ZnCl<sub>2</sub>), zinc phosphate Zn<sub>3</sub>(PO<sub>4</sub>)<sub>2</sub> and zinc carbonate (ZnCO<sub>3</sub>). Overnight grown single colonies were transferred aseptically by inoculating as spot on respective zinc medium plates (Sharma et al., 2012). These plates were covered with aluminum foil and incubated in dark at 28°C for 14 days. Zinc solubilizing strains produced clear zones around colonies. The diameter of these zones was recorded.



## Plant Experiments

To analyze the effect of zinc solubilizing bacteria on wheat growth and development, plant experiments were carried out. Based on zinc solubilizing ability, five strains; *Pseudomonas fragi* (EPS 1), *Pantoea dispersa* (EPS 6), *Pantoea agglomerans* (EPS 13), *Enterobacter cloacae* (EPS 2), and *Rhizobium* sp. (LHRW1) were selected for plant experiments and zinc carbonate ( $ZnCO_3$ ) was used as zinc source. In total, seven treatments with 10 replicates each, were designed as follows: Control (without zinc source + without bacteria), Control+ $ZnCO_3$  (without bacteria),  $ZnCO_3$  + EPS 1,  $ZnCO_3$  + EPS 6,  $ZnCO_3$  + EPS 13,  $ZnCO_3$  + PBS 2 and  $ZnCO_3$  + LHRW1. Seventy plastic pots of 11.5 cm diameter and 10.5 cm height were labeled and 500 g autoclaved oven-dried sand was added per pot. One percent  $ZnCO_3$ , i.e., 5 g  $ZnCO_3$  per 500 g sand was added in each of the 60 pots excluding 10 pots of the control treatment. For seed sterilization, 100 seeds of wheat variety, i.e., Faisalabad-2008 were soaked in 100 ml of 10% bleach solution for 15 min, and four successive washes of 10 min each were given using 100 ml autoclaved water (Cheng et al., 1997). Using sterile forceps the seeds were carefully transferred to 1% water-agar plates and sealed plates were incubated at 28°C for 3 days to allow germination.

Zinc solubilizing isolates were individually inoculated in 60 ml LB broth and grown in shaking incubator at 120 rpm, 28°C. After 24 h, the optical density of each strain was adjusted at 1.0 at the wavelength of 600 nm. Cells were harvested from 50 ml culture at 6,000 rpm for 20 min and resuspended in 0.85% saline, containing  $10^8$  cells/ml for inoculum. Fifty milliliter sterile full strength, nitrogen containing Hoagland's solution (Hoagland and Arnon, 1950) was added in each pot. Using sterilized forceps, 3-days old seedlings were transferred in pots and 1 ml bacterial inoculum was given to each respective pot. Pots were placed in a climate room and arranged in a Randomized Complete Block Design (RCBD). The temperature in climate room was maintained at  $20 \pm 2^\circ C$ ; with light source of  $6,000 \pm 500$  FLUX and light period of  $10 \pm 1$  h. To provide moisture, plants were watered at alternate days using autoclaved distilled water. Two sets of experiments were carried out. For first set, Plants were harvested after 1 month. This experiment was repeated twice. However, for second set, plants were harvested after 3 months (at grain level). Roots were washed using tap water and separated from shoots. Lengths, fresh, and dry weights of all samples including shoots and roots were measured. Data was statistically analyzed using the Statistical Package for the Social Sciences (SPSS) software (IBM Statistics 23.0).

## Analysis of Zinc Content Using Atomic Absorption Spectroscopy

Roots, shoots and grains of three plant samples per treatment were analyzed for zinc estimation. 0.1 g plant material was digested in di-acid mixture containing 25 ml concentrated nitric acid and 10 ml concentrated sulphuric acid. The mixture was heated at 70°C until complete digestion and diluted using 50 ml distilled water. Extract was filtered through a Whatman's filter paper (Jepkoech et al., 2013) and samples were analyzed for total zinc content using atomic absorption spectrophotometer (Varian AA 240 F.S., USA).

## RESULTS

### Biochemical and Molecular Characterization of Bacterial Isolates

Based on gram staining, cell morphology and biochemical tests, wheat isolates were characterized according to Bergey's manual of determinative bacteriology (Table 1). Based on 16S rRNA sequence analysis, two isolates were identified as *Pseudomonas fragi* (EPS 1, EPS 15), five isolates as different species of *Pantoea*, i.e., *P. dispersa* (EPS 6), *Pantoea* sp. (EPS 4) and *P. agglomerans* (EPS 2, EPS 17, EPS 13), respectively; three isolates as *Acinetobacter johnsonii* (EPS 5, EPS 10, EPS 11), one as *Kosakonia oryzae* (EPS 7), one as *Enterobacter cloacae* (EPS 14), EPS 12 as *Microbacterium* sp., and one as *Bacillus pumilus* (EPS 16). Phylogenetic tree is shown in Figure 1. Sequence lengths, accession numbers and percentage homology of each strain is summarized in Table 2.

### Plant Growth Promoting Assays Indole-3-Acetic Acid (IAA) Production

For qualitative assessment of IAA, all isolates except *Bacillus pumilus* (EPS 16), displayed color change ranging from light pink to reddish, on the addition of Salkowski's reagent, indicating a positive result for IAA (Figure S1). Quantification through HPLC showed maximum indole acetic acid production by *Enterobacter cloacae* (EPS 14), i.e., 12.125  $\mu g/ml$ , followed by *Pantoea agglomerans* (EPS 17) which produced 8.449  $\mu g/ml$  of IAA (Figure S2). Among all isolates, *Acinetobacter johnsonii* (EPS 11) showed minimum indole acetic acid production of 0.066  $\mu g/ml$  (Table 3).

### Siderophore Assay and HCN Production

Four isolates were siderophore positive showing color change from greenish blue to yellow. Among these four, *Kosakonia oryzae* (EPS 7) showed maximum siderophore production and produced biggest halo around bacterial colony. All isolates were found negative for HCN production as color change in filter paper was not observed (Table 3).

### Extracellular Enzyme Assays

Five isolates i.e., *Pantoea agglomerans* (EPS 2), *Acinetobacter johnsonii* (EPS 5), *Pantoea dispersa* (EPS 6), *Bacillus pumilus* (EPS 16), and *Pantoea agglomerans* (EPS 17) showed whitish translucent zones around colonies indicating a positive lipase result while *Acinetobacter johnsonii* (EPS 10) and *Pantoea agglomerans* (EPS 13) showed very light zones and were weak positive for the test. For protease test, six isolates showed halo zone around the bacterial colonies and were positive for the assay while nine isolates didn't produce protease. Six isolates showed phosphate solubilization on NBRIP medium by forming a halo zone around their colonies (Figure S3). However, nine isolates did not solubilize phosphate. Among 14 bacterial isolates, three isolates i.e., *Pantoea agglomerans* (EPS 2 and EPS 13) and *Pantoea dispersa* (EPS 6) formed a light yellow/whitish zone around their colonies and hence were cellulase positive (Table 3).

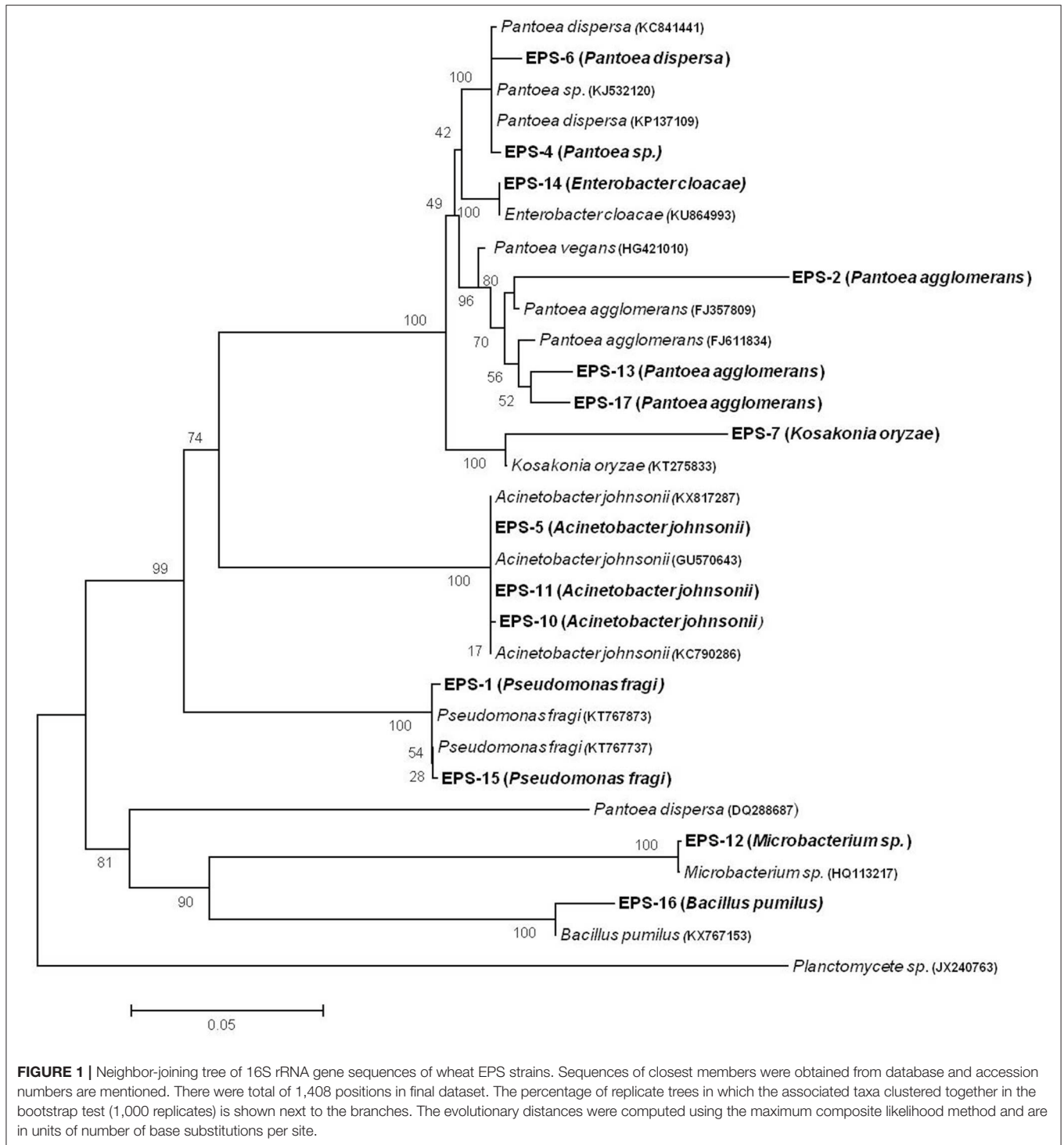
**TABLE 1 |** Biochemical Characterization of EPS isolates using QTS-24 identification kits and Bergey's Manual of Identification.

Sr. No.	Identification																						
	1	2	3	4	5	6	7	8	9	10	11	12	13	14	15	16	17	18	19	20	21	Identification Bergey's Manual	
Test/Bacterial Isolates	ONPG	CIT	MALO	ADH	ODC	H <sub>2</sub> S	UREA	VP	GEL	NO <sub>3</sub> /N <sub>2</sub>	MR	MOT	OX	GLU	Suc	RHAM	SORB	MEL	RAF	FRUC	MANS		
EPS 1	-	+	+	+	+	+	+	+	-	-/+	+	+	+	+	-	-	-	-	-	-	-	-	<i>Pseudomonas fragi</i>
EPS 2	+	-	+	-	-	-	-	+	-	+/+	+	+	-	+	+	-	-	+	-	w	+	+	<i>Pantoea sp.</i>
EPS 4	+	-	+	-	-	-	-	-	+	-/+	-	-	-	w	w	-	-	+	+	+	-	-	<i>Pantoea sp.</i>
EPS 5	-	-	-	-	-	+	-	+	-	+/-	-	-	+	+	+	+	+	+	-	-	-	-	<i>Acinetobacter sp.</i>
EPS 6	+	-	-	-	-	-	-	+	-	-/+	+	+	+	+	+	+	-	+	-	+	+	+	<i>Pantoea dispersa</i>
EPS 7	+	-	-	-	-	+	-	+	-	+/-	+	+	+	w	+	+	+	-	-	+	+	w	<i>Kosakonia sp.</i>
EPS 10	-	+	+	+	+	+	+	-	-	+/-	+	-	+	+	+	+	+	+	+	+	+	-	<i>Acinetobacter johnsonii</i>
EPS 11	+	-	+	-	-	-	-	-	+	+/-	-	+	-	+	+	w	+	w	-	-	-	-	<i>Acinetobacter sp.</i>
EPS 12	-	-	+	-	-	-	-	+	-	-/+	-	-	-	-	+	-	+	+	-	+	-	-	<i>Microbacterium sp.</i>
EPS 13	+	-	+	-	-	-	-	+	-	-/+	+	+	+	+	-	w	-	+	-	+	+	+	<i>Pantoea vagans</i>
EPS 14	+	+	-	+	-	-	-	+	-	-/+	+	+	+	+	+	+	+	+	+	+	+	+	<i>Enterobacter sp.</i>
EPS 15	-	-	-	+	-	+	-	+	-	+/-	+	+	+	+	+	-	-	+	-	+	+	-	<i>Pseudomonas fragi</i>
EPS 16	-	-	-	-	-	-	-	+	+	-/+	-	+	+	+	+	-	+	+	-	-	-	-	<i>Bacillus sp.</i>
EPS 17	+	-	+	-	-	-	-	+	+	+/-	+	+	-	+	+	+	+	+	+	w	+	+	<i>Pantoea agglomerans</i>

(+): activity, (-): no activity, (w): weak activity.

Symbols: ONPG, Ortho-Nitrophenyl-β-galactosidase; CIT, sodium citrate; MALO, malonate; ADH, arginine dihydrolase; ODC, ornithine decarboxylase; H<sub>2</sub>S, hydrogen sulfide; UREA, urease; VP, voges-proskauer; GEL, gelatin hydrolysis; NO<sub>3</sub>, nitrate reduction; N<sub>2</sub>, nitrogen gas production; GLU, glucose; SUC, sucrose; RHAM, rhamnose; SORB, sorbitol; MEL, melibiose; RAF, raffinose; FRUC, fructose; MANS, mannose.

All strains were positive for mannitol, (MANN) and arabinose (ARAB) and negative for inositol (INOS), inositol (IND) and adonitol (ADO). All strains were found positive for maltose (MALT) except EPS-1 while only EPS-10 and EPS-15 were found positive for lysine decarboxylase (LDC) and tryptophan deaminase (TDA) respectively.



### Zinc Solubilization Assay

Zinc solubilization ability of the bacterial strains was evaluated by determining the zone diameter. Among all 24 wheat and sugarcane isolates, six i.e., *Pseudomonas fragi* (EPS 1), *Pantoea dispersa* (EPS 6), *Pantoea agglomerans* (EPS 13), *Enterobacter cloacae* (PBS 2 and PBS 1), and *Rhizobium* sp. (LHRW1)

showed zinc solubilization zones on  $ZnCO_3$  medium. Maximum zone of 1.8 cm was observed for *Rhizobium* sp. (LHRW1). On ZnO medium, six isolates *Pseudomonas fragi* (EPS 1), *Pantoea dispersa* (EPS 6), *Enterobacter cloacae* (PBS 1 and PBS 2), *Rhizobium* sp. (LHRW1) and *Pantoea* sp. (LS1-b) showed solubilization. On  $Zn_3(PO_4)_2$  medium, 20 strains

**TABLE 2** | Sequence length and % homology of EPS isolates based on BLAST results.

Sr. No.	Strain	Sequence Length	Query Cover (%)	E value	% Identity	Sequences ID	Accession Number	Identified As
1	EPS 1	1,425	100	0.0	98	KT767873	KY848812	<i>Pseudomonas fragi</i>
2	EPS 2	1,395	100	0.0	95	FJ357809	KY848813	<i>Pantoea agglomerans</i>
3	EPS 4	1,389	100	0.0	99	KJ532120	KY848814	<i>Pantoea</i> sp.
4	EPS 5	1,139	100	0.0	99	KX817287	KY848815	<i>Acinetobacter johnsonii</i>
5	EPS 6	1,386	100	0.0	99	KP137109	KY848816	<i>Pantoea dispersa</i>
6	EPS 7	1,356	100	0.0	96	KT275833	KY848817	<i>Kosakonia oryzae</i>
7	EPS 10	1,406	100	0.0	99	KC790286	KY848818	<i>Acinetobacter johnsonii</i>
8	EPS 11	1,393	100	0.0	99	GU570643	KY848819	<i>Acinetobacter johnsonii</i>
9	EPS 12	1,434	100	0.0	97	HQ113217	KY848820	<i>Microbacterium</i> sp.
10	EPS 13	1,385	100	0.0	100	EU240963	MF150305	<i>Pantoea agglomerans</i>
11	EPS 14	1,354	100	0.0	100	KU864993	KY848821	<i>Enterobacter cloacae</i>
12	EPS 15	1,348	100	0.0	99	KT767737	KY848822	<i>Pseudomonas fragi</i>
13	EPS 16	1,390	100	0.0	99	KX767153	KY848823	<i>Bacillus pumilus</i>
14	EPS 17	1,025	100	0.0	99	FJ611834	KY848824	<i>Pantoea agglomerans</i>

**TABLE 3** | Plant growth promoting traits by EPS bacterial strains.

Wheat isolates	Protease assay	Lipase assay	Cellulase assay	Phosphatase assay	IAA production ( $\mu\text{g/ml}$ )	Siderophore assay
EPS 1	–	–	–	+	0.25	+
EPS 2	W	+	+	w	0.312	–
EPS 4	–	–	–	–	0.71	–
EPS 5	–	+	–	w	0.394	+
EPS 6	–	+	+	w	0.934	–
EPS 7	–	–	–	–	0.413	++
EPS 9	+	–	–	–	0.324	–
EPS 10	–	W	–	–	0.108	–
EPS 11	+	–	–	–	0.066	–
EPS 12	+	–	–	–	0.472	–
EPS 13	–	W	+	+	1.134	–
EPS 14	–	–	–	–	12.125	+
EPS 15	–	–	–	+	0.912	–
EPS 16	+	+	–	–	–	–
EPS 17	+	+	–	–	8.449	–

–, no activity; w, weak activity; ++, very good activity.

showed weak solubilization and four isolates, i.e., *Pantoea* sp. (EPS 4), *Acinetobacter johnsonii* (EPS 11, EPS 10) and *Klebsiella oxytoca* (LHRW2) did not show any solubilization. *Pseudomonas fragi* (EPS 15) showed maximum diameter of 1 cm on  $\text{Zn}_3(\text{PO}_4)_2$  medium. All 24 isolates did not solubilize zinc on  $\text{ZnCl}_2$  and  $\text{ZnSO}_4$  supplemented medium (Figures S4–S6, Table S1).

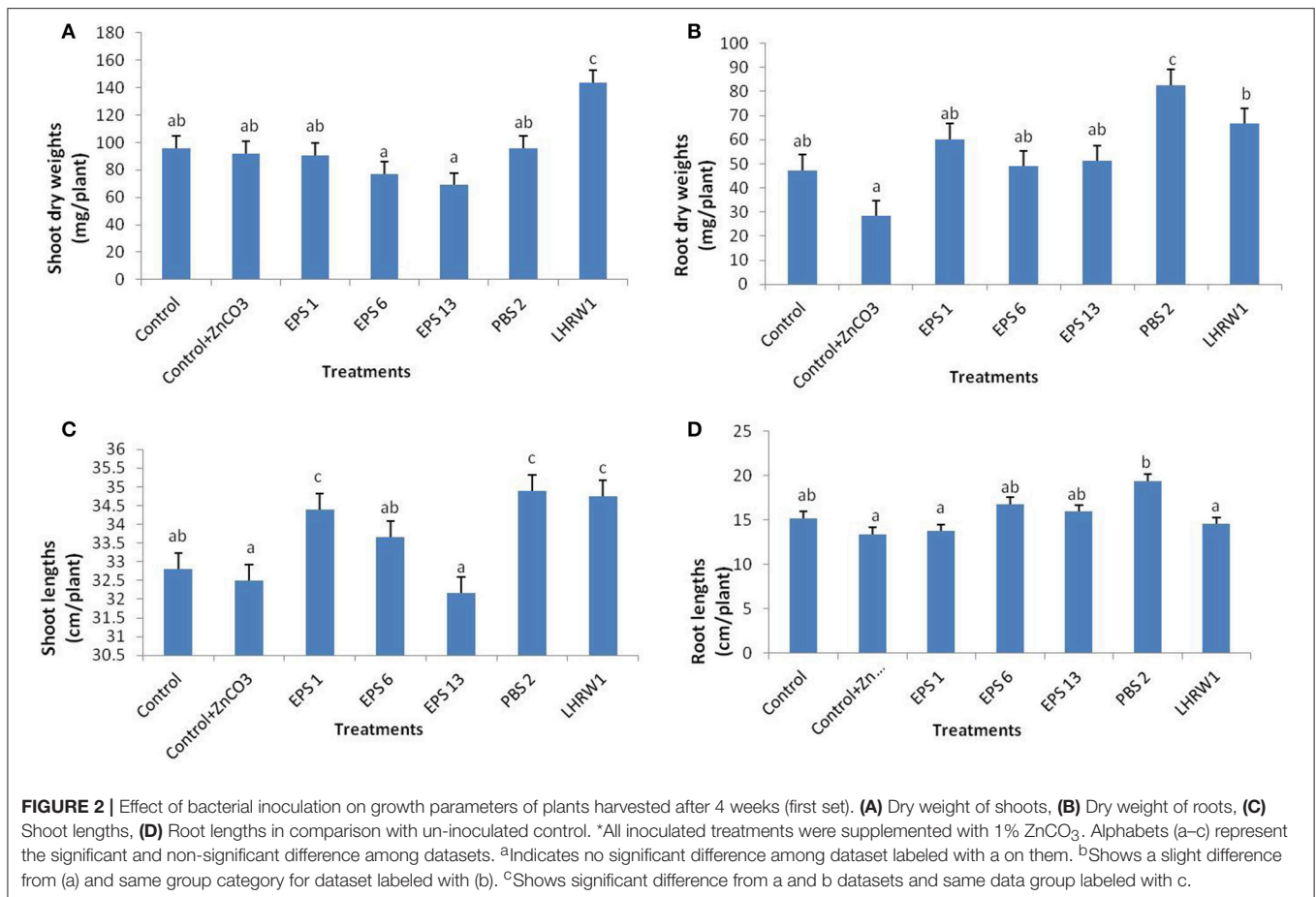
## Plant Experiments

Among zinc sources, zinc carbonate was maximum solubilized by bacterial isolates as compared to other zinc salts, hence it was selected for zinc supplementation in plant experiments. Based on zinc carbonate solubilization ability, five strains were selected for plant experiments. These strains were also positive for indole-3-acetic acid production and phosphate solubilization. The results described below are based on average values of the ten replicates of each treatment.

### A. Plants harvested after 4 weeks (First set)

**Growth parameters:** The results of first set of plant experiments manifested that two of these strains; PBS 2 and LHRW1, considerably increased dry weights of roots and shoots as compared with un-inoculated plants. Significant increase in shoots dry weights was only seen for the plants inoculated with *Rhizobium* sp. (LHRW1). Plants inoculated with all other strains and un-inoculated showed almost similar shoot dry weights. No significant difference was observed in fresh root and shoot weights for inoculated and un-inoculated plants (**Figure 2A**).

Significantly high as well as maximum dry root weight was recorded for the plants inoculated with *Enterobacter cloacae* (PBS 2) and it was followed by *Rhizobium* sp. (LHRW1) inoculated plants. Non-significant increase was found in dry root weights of plants inoculated with all other strains as compared with un-inoculated control plants (**Figure 2B**, Figures S7, S8).



*Enterobacter cloacae* (PBS 2) also significantly contributed to increase lengths of roots and shoots while *Pseudomonas fragi* (EPS 1) and *Rhizobium* sp. (LHRW1) increased lengths of shoots. The maximum shoot length was recorded for *Enterobacter cloacae* (PBS 2) inoculated plants; *Pseudomonas fragi* (EPS 1) and *Rhizobium* sp. (LHRW1) followed it with minor difference. No other strain was observed to significantly increase root and shoot lengths with respect to un-inoculated controls (**Figures 2C,D**).

**Zinc Content:** Significant increase was found in zinc content of shoots and roots of inoculated plants as compared to control. The zinc content of control shoots was found to be 4.25 mg/kg. Maximum zinc content, i.e., 18.25 mg/kg was found in shoots of *Enterobacter cloacae* (PBS 2) inoculated plants, followed by *Pantoea agglomerans* (EPS 13) which showed zinc content of 17.85 mg/kg. Zinc content in shoots of other treatments ranged from ~ 12 to 15 mg/kg for inoculated plants and ~ 10 mg/kg for un-inoculated plants provided with ZnCO<sub>3</sub> (**Figure 3A**).

Control plants that were not given any zinc also showed zinc presence in roots and shoots; 4.25 mg/kg of zinc in shoots and 3.74 mg/kg in roots. This zinc can be correlated with the amount of zinc provided to the plants in Hoagland's solution that contains 0.05 mg/l zinc. Zinc content of the shoots of control plants supplemented with ZnCO<sub>3</sub> was also higher than that of the control plants. This higher amount of zinc in ZnCO<sub>3</sub> supplemented

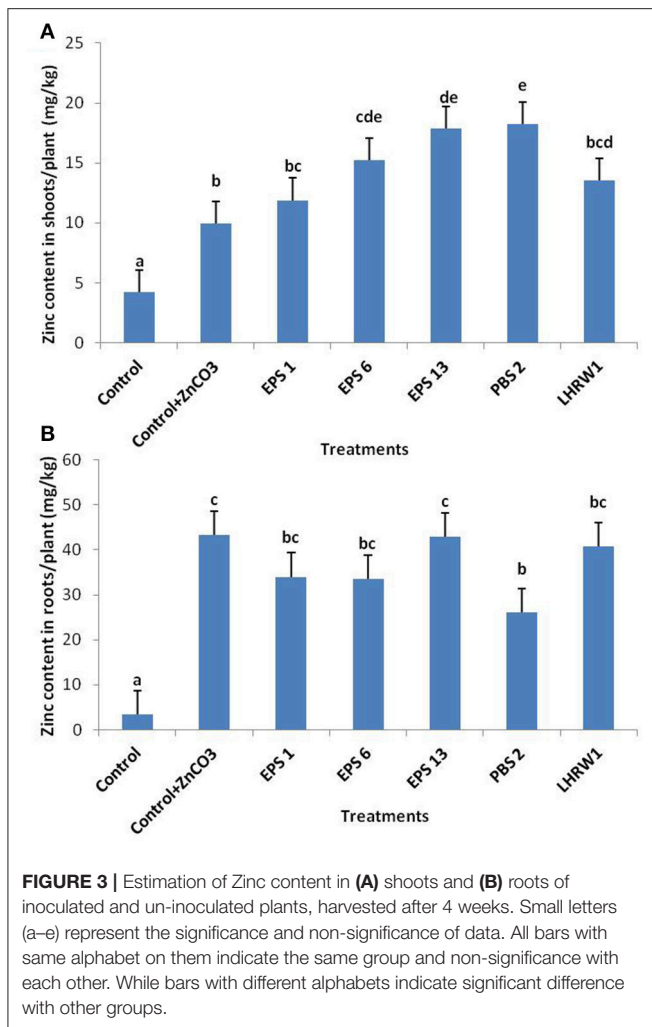
control is actually associated with the ability of the plant itself to mobilize available nutrients and use them for their growth.

The zinc content of roots of inoculated plants showed even more significant increase as compared to control plants. *Pantoea agglomerans* (EPS 13) showed maximum zinc content of 42.96 mg/kg in roots, followed by *Rhizobium* sp. (LHRW1) inoculated plants which showed zinc content of 40.77 mg/kg. Zinc content in roots of other inoculated treatments ranged from 26 to 34 mg/kg. However, difference was non-significant as compared to roots of un-inoculated plants provided with ZnCO<sub>3</sub> (**Figure 3B**). Analysis of zinc content of roots and shoots demonstrate that plants can take up available zinc to their roots but its transport to the shoots can be facilitated by inoculating the plants with PGPR that can also colonize inside the plants as endophytes and make zinc bio-available to the plants.

#### **B: Plants harvested after 3 months (second set)**

**Growth parameters:** Plants were harvested after 3 months and data for shoots and roots weights and lengths was recorded. Highest fresh weights for shoots were recorded for plants inoculated with *Rhizobium* sp. (LHRW1) followed by *E. cloacae* (PBS 2). All other strains showed insignificant difference in shoot fresh weights when compared with un-inoculated controls (**Figure 4A**). None of the strains showed significant increase





in fresh weights of roots when compared with control plants (Figure 4B).

Most of these strains significantly increased dry weights of roots and shoots as compared with un-inoculated controls. Significant increase in shoots dry weights was seen for the plants inoculated with strains *P. dispersa* (EPS 6), *P. agglomerans* (EPS 13) and *E. cloacae* (PBS 2). Maximum dry shoot weights were recorded for the plants inoculated with *E. cloacae* (PBS 2). Plants inoculated with all other strains and un-inoculated showed almost similar shoot dry weights (Figure 4C).

*Pseudomonas fragi* (EPS 1), *E. cloacae* (PBS 2) and *Rhizobium* sp. (LHRW1) also significantly increased root dry weights as compared to controls. Plants inoculated with *Pseudomonas fragi* (EPS 1) showed highest dry root weights followed by *Rhizobium* sp. (LHRW1) and *E. cloacae* (PBS 2) when compared with un-inoculated plants. *Rhizobium* sp. (LHRW1) and *E. cloacae* (PBS 2) also significantly increased dry weights of roots in plants harvested after 4 weeks. (Figure 4D).

*Rhizobium* sp. (LHRW1) significantly increased shoot lengths while all other strains showed insignificant increase with respect to un-inoculated ones (Figure 4E). *Rhizobium* sp. (LHRW1) plants showed similar results for plants harvested after 4 weeks.

*P. agglomerans* (EPS 13) inoculated plants showed maximum increase in root length. Unlike previous experiment, increase in root length of *E. cloacae* (PBS 2) inoculated plants was insignificant (Figure 4F).

**Zinc Content** Significant increase in zinc content of grains was observed for the plants inoculated with *Pseudomonas fragi* (EPS 1), *Pantoea dispersa* (EPS 6) and *Pantoea agglomerans* (EPS 13). Highest amounts of zinc were detected in the grains of *Pseudomonas fragi* (EPS 1) inoculated plants with 6.96 mg/kg of zinc followed by *Pantoea dispersa* (EPS 6) and *Pantoea agglomerans* (EPS 13) which had 6.3 and 4.64 mg/kg of zinc, respectively. Plants inoculated with strains *E. cloacae* (PBS 2) and *Rhizobium* sp. (LHRW1) showed insignificant increase in grain zinc content as compared to un-inoculated controls, i.e., 2.66 mg/kg and 2.68 mg/kg in control+ZnCO<sub>3</sub> (Figure 5A). These results indicate the efficacy of three PGPR strains; *Pseudomonas fragi* (EPS 1), *Pantoea dispersa* (EPS 6) and *Pantoea agglomerans* (EPS 13) that they enhanced the bioavailability of zinc and mobilized it toward wheat grains.

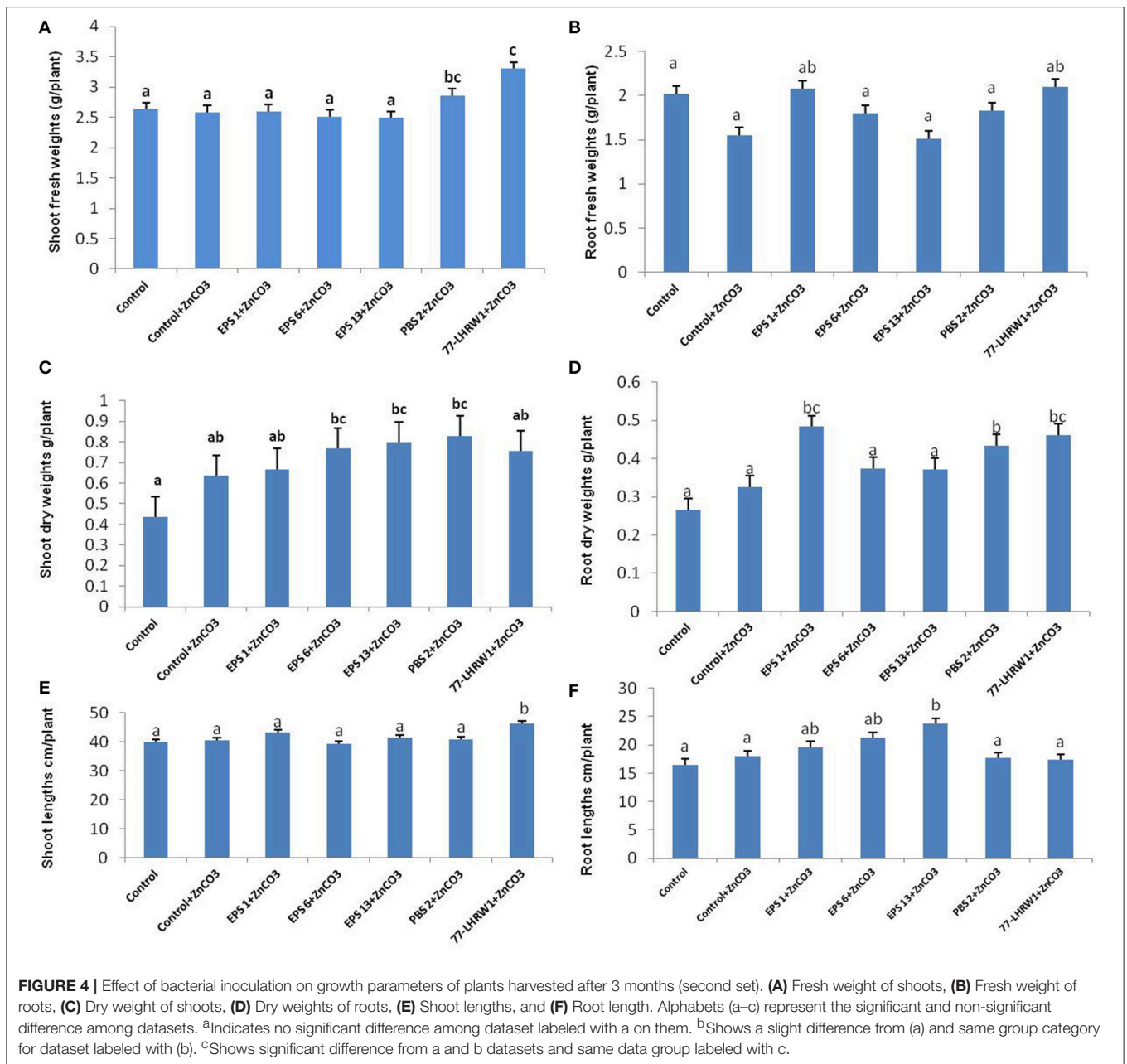
Comparison of control and inoculated plants showed considerable increase in zinc content of shoots of inoculated ones. Highest zinc content in shoots was seen for the plants inoculated with strain *P. fragi* (EPS 1); 8.83 mg/kg followed by *P. agglomerans* (EPS 13) and *P. dispersa* (EPS 6) which showed zinc content of 5.73 and 4.46 mg/kg, respectively. Though, *E. cloacae* (PBS 2) and *Rhizobium* sp. (LHRW1) also showed increase in zinc content of shoots but it was non-significant (Figure 5B).

Interestingly, control plants showed significant difference in zinc content of roots as compared to all inoculated treatments and highest zinc content was recorded for control plants i.e., 47.97 mg/kg followed by *P. fragi* (EPS 1) that was 42.53 mg/kg. Minimum zinc content was seen for the roots of the plants inoculated with strain *E. cloacae* (PBS 2) that was 18.207 mg/kg. All other strains showed non-significant difference of zinc content in comparison to ZnCO<sub>3</sub> supplemented control plants (Figure 5C).

## DISCUSSION

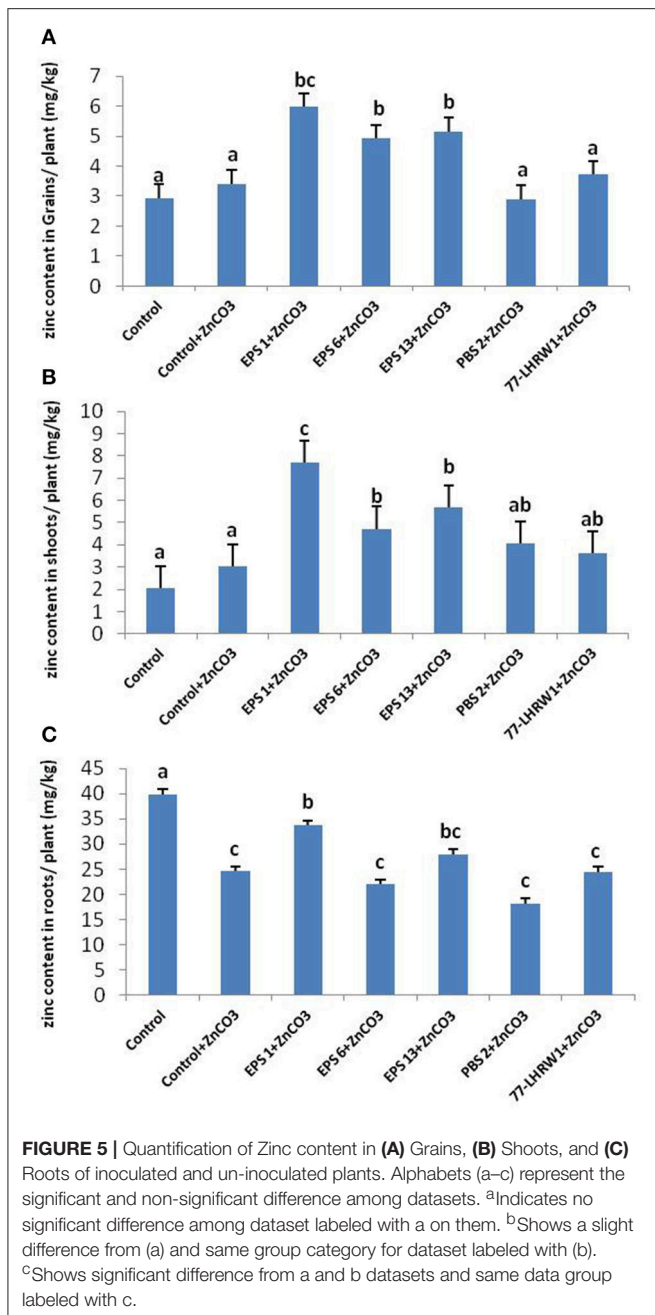
Zinc is the key constituent of plants and is very crucial for their development. Zinc deficiency is the most common micronutrient deficiency in crops worldwide and results in substantial losses in crop yields. Use of zinc fertilizers may not be cost effective in alleviating zinc deficiency and increasing crop yield. In addition to this, zinc fertilizers are underutilized in many countries like Pakistan, despite the widespread occurrence of zinc-deficient soils. These zinc deficient soils hamper the growth of many plants including staple foods such as wheat, rice, corn and sugarcane. Wheat yield is critically affected by zinc deficiency and local studies have shown the use of zinc fertilizers to overcome this (Khan et al., 2009; Ahmad et al., 2012; Joy et al., 2017). But use of chemical fertilizers threatens public health and environment and also puts farmer's livelihood in jeopardy. Therefore, use of chemical fertilizers has declined in many countries and growers are returning to organic farming.

Rhizobacteria play a vital role in environmental cycling processes such as solubilization of metals into soluble forms that



are suitable for plant uptake. These ions and metals significantly improve plant growth and nutrition. The main focus of this study was to identify and characterize the strains that have potential to be used as zinc-biofertilizers. Based on zinc solubilization, three EPS producing strains of wheat and two of sugarcane, were selected. One of these strains was identified as *Pseudomonas fragi* (EPS 1), two as *Pantoea dispersa* (EPS 6) and *Pantoea agglomerans* (EPS13), one sugarcane strain as *Enterobacter cloacae* (PBS 2), and one as *Rhizobium* sp. (LHRW1). These bacterial genera are known to colonize rhizosphere of wheat and sugarcane and increasing plant growth (Baig et al., 2012; Verma et al., 2015). Large body of literature describes the potential of these PGPR genera to increase plant growth and crop yield.

Various species of *Pseudomonas* have extensively been studied in relation to plant growth promotion. *P. fluorescens* has shown indole acetic acid production resulting in enhanced growth of onion (Reetha et al., 2014) as well as phosphate solubilization (Oteino et al., 2015). Zinc solubilization (Pawar et al., 2015), HCN production and biocontrol properties of *Pseudomonas* sp. have also been reported (Tank and Saraf, 2009). However, few reports are available for the beneficial effect of *P. fragi* strains on plants. Selvakumar et al. (2009) reported P solubilization, IAA and HCN production, enhanced germination rate, plant biomass and uptake of nutrients by wheat plants upon inoculation with *P. fragi* strain. However, reports of zinc solubilization by *P. fragi* were not found. Species belonging to *Pantoea* have been extensively



studied and reported to have many plant growth promoting abilities. *Pantoea agglomerans* has been reported to solubilize phosphorus and produce IAA, siderophores as well as ammonia. On inoculation with *P. agglomerans*, jute plants have shown significant increase in plant height, weight, chlorophyll content and total carbohydrate content (Majumdar and Chakraborty, 2015). Plant growth promoting abilities of *Enterobacter* species have been reported extensively. *Enterobacter asburiae* has shown IAA, HCN, ammonia and siderophore production, as well as phosphate solubilization (Ahemad and Khan, 2010). *Rhizobium* sp. and *E. cloacae* have been reported to produce phytohormones like acetoin and other bioactive compounds. It has also shown

to solubilize phosphate. Inoculation of *Pisum sativum*, with these strains resulted in a significant increase in growth of the plant (Khalifa et al., 2016). In this study too, *E. cloacae* (EPS 14) and *Pantoea agglomerans* (EPS 17) have also shown highest IAA production with 12.125 and 8.449  $\mu\text{g/ml}$ . These genera have also previously been reported for producing high amounts of indole-3-acetic acid; 23.006  $\mu\text{g/ml}$  (Mohite, 2013).

Our findings are consistent with previously reported literature and use of Zinc solubilizing *Pseudomonas fragi*, *Pantoea agglomerans*, *E. cloacae*, and *Rhizobium* sp. showed encouraging results. When inoculated with these strains, wheat plants showed enhanced shoot and root length and weight as well as zinc content. Most of the strains used in this study are not yet reported for zinc solubilizing ability and for their effect on wheat growth. Significant difference was seen in root and shoot zinc content with all inoculated plants as compared to un-inoculated controls. *Pseudomonas fragi* (EPS 1), *Pantoea dispersa* (EPS 6) and *Pantoea agglomerans* (EPS 13) showed promising results when the grain zinc content of wheat was analyzed after 3 months. *Pseudomonas fragi* (EPS 1) showed highest grain zinc content followed by *Pantoea agglomerans* (EPS 13) and *Pantoea dispersa* (EPS 6). Though *Rhizobium* sp. (LHRW1) and *E. cloacae* (PBS2) significantly increased biomass of the plant in all three experiments but highest root dry weight was observed by *Pseudomonas fragi* strain EPS 1. Plants harvested after 3 months, also showed the maximum amount of zinc in roots of un-inoculated control plants when compared with inoculated ones which is evidence that these PGPR genera have successfully helped the plant in zinc solubilization and uptake. It supports that inoculation with this strain accelerated the bioavailability of zinc to the roots of the plants and provided it with more solubilized zinc as compared to un-inoculated controls.

Increased zinc content of roots and shoots as compared to un-inoculated plants is supported by the previous reports where inoculation of plants with PGPR has resulted in increased yield, enhanced plant growth and improved nutrition and many effective strains have been formulated as biofertilizers in this regard. The PGPR strains identified so far mainly belong to genera *Pseudomonas*, *Ochrobacterum*, *Bacillus*, *Azospirillum*, *Azotobacter*, *Rhizobium*, *Stenotrophomonas*, *Serratia*, and *Enterobacteria* (Maleki et al., 2011). In addition to increase the overall yield of the plant, PGPR have extensively been reported in combating nutrient deficiencies of the plants and has been given attention to be used as biofertilizers. For example, Ramesh et al. (2014) has reported increased mobilization of zinc by zinc solubilizing *Bacillus aryabhatai* in wheat and soybean. Recent studies have also revealed 7–12% enhanced zinc translocation toward wheat grains by certain strains of *Serratia* sp., *Bacillus* sp. *Pseudomonas* sp. and many others as compared to chemical zinc supplementation to the plant (Lefèvre et al., 2014). In addition to increase biomass, zinc solubilizing bacteria used in this study, have also significantly enhanced zinc content of shoots and roots in comparison to un-inoculated plants which is a well documented phenomenon and has been explained in many earlier research studies. Previous studies have demonstrated that application of PGPR or PGPE has enhanced zinc translocation toward rice and wheat grains and this ability of rhizobacteria



or plant growth promoting endophytes (PGPE) is related with their capacity of executing successful plant microbe interactions such as induction of physiological processes, mineralization and solubilization (Lucas et al., 2014; Wang et al., 2014). Plants apoplasts are known for offering different growth conditions and hence, many rhizosphere bacterial strains can be the effective endophytic colonizers of the plants (Khan et al., 2015). Bacterial genera used in this study have also been reported to colonize plant roots as endophytes and thus significantly solubilize minerals and available nutrients. Research studies have also shown that plants, when supplied with different nutrients as chemical fertilizers or through biofortification, triggered many physiological changes that helped them to take up the nutrients from the soil (Chattha et al., 2017).

In addition to this, all five strains used in plant experiments could solubilize phosphate and produced indole-3-acetic acid. IAA can also be a contributing factor in increasing plant growth and biomass. Though, no source of insoluble P was present in soil, but P solubilization is an important parameter in improving plant growth and cannot be neglected.

Zinc solubilization by PGPR is relatively a newer approach and most of the strains have not yet been tested for this activity. This study indicates the potential of *Pantoea*, *E. cloacae* and especially *Pseudomonas fragi* to be used as

bio-fertilizer and overcome zinc deficiency in countries like Pakistan where zinc fertilizers are under-used and are not cost effective.

## AUTHOR CONTRIBUTIONS

SK: Conducted major experiments; IS: manuscript writing and data analysis; DB: molecular analysis; MR: conducted HPLC analysis; KM: provided the basic lab infrastructure, Dean for Research and Postgraduate Studies; SM: edited manuscript, guided in whole experiment plan.

## ACKNOWLEDGMENTS

Authors gratefully acknowledge the support of Professor Dr. Dildar Ahmed (Department of Chemistry, Forman Christian College; A Chartered University, Lahore, Pakistan) for kindly providing access to atomic absorption spectroscopy.

## SUPPLEMENTARY MATERIAL

The Supplementary Material for this article can be found online at: <https://www.frontiersin.org/articles/10.3389/fmicb.2017.02593/full#supplementary-material>

## REFERENCES

- Abaid-Ullah, M., Hassan, M. N., Jamil, M., Brader, G., Shah, M. K. N., Sessitsch, A., et al. (2015). Plant growth promoting rhizobacteria: an alternate way to improve yield and quality of wheat (*Triticum aestivum*). *Int. J. Agric. Biol.* 17, 51–60.
- Ahemad, M., and Khan, M. S. (2010). Plant growth promoting activities of phosphate-solubilizing *Enterobacter asburiae* as influenced by fungicides. *Eurasia. J. Biosci.* 4, 88–95. doi: 10.5053/ejobios.2010.4.0.11
- Ahmad, M., Zahir, Z. A., Asghar, H. N., and Arshad, M. (2012). The combined application of rhizobial strains and plant growth promoting rhizobacteria improves growth and productivity of mung bean (*Vigna radiata* L.) under salt-stressed conditions. *Ann. Microbiol.* 62, 1321–1330. doi: 10.1007/s13213-011-0380-9
- Alexander, M. (1997). *Introduction to Soil Microbiology*. New York, NY: John Wiley and Sons.
- Alloway, B. J. (2004). *Zinc in Soil and Crop Nutrition*. Belgium: International Zinc Association.
- Alloway, B. J. (2008). *Zinc in Soils and Plant Nutrition*. Belgium: International Zinc Association.
- Baig, K. S., Arshad, M., Shaharoona, B., Khalid, A., and Ahmed, I. (2012). Comparative effectiveness of *Bacillus* spp. possessing either dual or single growth-promoting traits for improving phosphorus uptake, growth and yield of wheat (*Triticum aestivum* L.). *Ann. Microbiol.* 62, 1109–1119. doi: 10.1007/s13213-011-0352-0
- Bertani, G. (1952). Studies on lysogenesis. I. The mode of phage liberation by lysogenic *Escherichia coli*. *J. Bacteriol.* 62, 293–300.
- Cakmak, I., Pfeiffer, W. H., and McClafferty, B. (2010). Biofortification of durum wheat with zinc and iron. *Cereal Chem.* 87, 10–20. doi: 10.1094/CHEM-87-1-0010
- Chang, H. B., Lin, C. W., and Huang, H. J. (2005). Zinc induced cell death in rice (*Oryza sativa* L.) roots. *Plant Growth Regul.* 46, 261–266. doi: 10.1007/s10725-005-0162-0
- Chattha, M. U., Hassan, M. U., Khan, I., Chattha, M. B., Mahmood, A., Chattha, M. U., et al. (2017). Biofortification of wheat cultivars to combat zinc deficiency. *Front. Plant Sci.* 8:281. doi: 10.3389/fpls.2017.00281
- Cheng, M., Fry, J. E., Pang, S., Zhou, H., Hironaka, C. M., Duncan, D. R., et al. (1997). Genetic transformation of wheat mediated by *Agrobacterium tumefaciens*. *Plant Physiol.* 115, 971–980. doi: 10.1104/pp.115.3.971
- Chun, J., and Goodfellow, M. (1995). A phylogenetic analysis of the genus *Nocardia* with 16S rRNA gene sequences. *Int. J. Syst. Bacteriol.* 45, 240–245. doi: 10.1099/00207713-45-2-240
- Deepak, J., Geeta, N., Sachin, V., and Anita, S. (2013). Enhancement of wheat growth and Zn content in grains by zinc solubilizing bacteria. *Int. J. Agr. Environ. Biotechnol.* 6, 363–370. doi: 10.5958/j.2230-732X.6.3.004
- Epstein, E., and Bloom, A. J. (2005). *Mineral Nutrition of Plants: Principles and Perspectives*. California: Sinauer Associates.
- Fasim, F., Ahmed, N., Parsons, R., and Gadd, G. M. (2002). Solubilization of zinc salts by a bacterium isolated from the air environment of a tannery. *FEMS Microbiol. Lett.* 213, 1–6. doi: 10.1111/j.1574-6968.2002.tb11277.x
- Glick, B. (2012). *Plant Growth-Promoting Bacteria: Mechanisms and Applications*. New York, NY: Hindawi Publishing Corporation.
- Gordon, A. S., and Weber, R. P. (1950). Colorimetric estimation of indole acetic acid. *Plant Physiol.* 26, 192–195. doi: 10.1104/pp.26.1.192
- Gunes, A., Inal, A., Adak, M. S., Alpaslan, M., Bagci, E. G., Erol, T., et al. (2007). Mineral nutrition of wheat, chickpea and lentil as affected by mixed cropping and soil moisture. *Nutr. Cycl. Agroecosyst.* 78, 83–96. doi: 10.1007/s10705-006-9075-1
- Gustin, J. L., Loureiro, M. E., Kim, D., Na, G., Tikhonova, M., and Salt, D. E. (2009). MTP1-dependent Zn sequestration into shoot vacuoles suggests dual roles in Zn tolerance and accumulation in Zn-hyperaccumulating plants. *Plant J.* 57, 1116–1127. doi: 10.1111/j.1365-3113X.2008.03754.x
- Hafeez, B., Khanif, Y. M., and Saleem, M. (2013). Role of zinc in plant nutrition-A review. *Am. J. Exp. Agric.* 3, 374–391. doi: 10.9734/AJEA/2013/2746
- Hoagland, D. R., and Arnon, D. I. (1950). *The Water-culture Method for Growing Plants without Soil*. Berkeley, CA: California Agricultural Experimental Station Publications; College of Agriculture; University of California.
- Hussain, A., Arshad, M., Zahir, Z. A., and Asghar, M. (2015). Prospects of zinc solubilizing bacteria for enhancing growth of maize. *Pak. J. Agri. Sci.* 52, 915–922.
- Jepkoech, J. K., Simiyu, G. M., and Arusei, M. (2013). Selected heavy metals in water and sediments and their bioconcentrations in plant (*Polygonum*



- pulchrum* in Sosiani River, Uasin Gishu County, Kenya. *J. Environ. Protect.* 4, 796–802. doi: 10.4236/jep.2013.48093
- Jones, D. L., and Darrah, P. R. (1994). Role of root derived organic acids in the mobilization of nutrients from the rhizosphere. *Plant Soil* 166, 247–257. doi: 10.1007/BF00008338
- Joy, E. J. M., Ahmad, W., Zia, M. H., Kumssa, D. B., Young, S. D., Anders, E. L., et al. (2017). Valuing increased zinc (Zn) fertiliser-use in Pakistan. *Plant Soil* 411:139. doi: 10.1007/s11104-016-2961-7
- Kabata-Pendias, A., and Pendias, H. (2001). *Trace Elements in Soils and Plants*. London: CRC Press.
- Karak, T., Singh, U. K., Das, S., Das, D. K., and Kuzyakov, Y. (2005). Comparative efficacy of ZnSO<sub>4</sub> and Zn-EDTA application for fertilization of rice (*Oryza sativa* L.). *Arch. Agron. Soil Sci.* 51, 253–264. doi: 10.1080/03650340400026701
- Khalifa, A. Y. Z., Alyseeh, A. M., Almalki, M. A., and Saleh, F. A. (2016). Characterization of the plant growth promoting bacterium, *Enterobacter cloacae* MSR1, isolated from roots of non-nodulating *Medicago sativa*. *Saudi J. Biol. Sci.* 23, 79–86. doi: 10.1016/j.sjbs.2015.06.008
- Khande, R., Sushil, K. S., Ramesh, A., and Mahaveer, P. S. (2017). Zinc solubilizing *Bacillus* strains that modulate growth, yield and zinc biofortification of soybean and wheat. *Rhizosphere* 4, 126–138. doi: 10.1016/j.rhisph.2017.09.002
- Khan, R., Gurmani, A. R., Khan, M. S., and Gurmani, A. H. (2009). Residual, direct and cumulative effect of zinc application on wheat and rice yield under rice wheat system. *Soil Environ.* 28, 24–28.
- Khan, M. U., Sessitsch, A., Harris, M., Fatima, K., Imran, A., and Arslan, M. (2015). Cr-resistant and endophytic bacteria associated with *Prosopis juliflora* and their potential as phytoremediation enhancing agents in metal-degraded soils. *Front. Plant Sci.* 5:755. doi: 10.3389/fpls.2014.00755
- Klopper, J. W., and Okon, Y. (1994). “Plant growth-promoting rhizobacteria (other systems),” in *Azospirillum/Plant Associations*, ed Y. Okon (Boca Raton: CRC Press), 111–118.
- Kumar, R. S., Ayyadurai, N., Pandiaraja, P., Reddy, A. V., Venkatesvarlu, Y., Prsakash, O., et al. (2005). Characterization of antifungal metabolite produced by a new strain *Pseudomonas aeruginosa* PUPa3 that exhibits broad spectrum antifungal activity and biofertilizing traits. *J. Appl. Microbiol.* 98, 145–154. doi: 10.1111/j.1365-2672.2004.02435.x
- Lefèvre, I., Vogel-Mikuš, K., Jeromel, L., Vavpetič, P., Planchon, S., Arçon, I., et al. (2014). Differential cadmium and zinc distribution in relation to their physiological impact in the leaves of the accumulating *Zygophyllum fabago* L. *Plant Cell Environ.* 37, 1299–1320. doi: 10.1111/pce.12234
- Lin, L., Kan, X., Yan, H., and Wang, D. (2012). Characterization of extracellular cellulose degrading enzymes from *Bacillus thuringiensis* strains. *Electron. J. Biotechnol.* 15, 1–7. doi: 10.2225/vol15-issue3-fulltext-1
- Lucas, J. A., García-Cristobal, J., Bonilla, A., Ramos, B., and Gutierrez-Manero, J. (2014). Beneficial rhizobacteria from rice rhizosphere confers high protection against biotic and abiotic stress inducing systemic resistance in rice seedlings. *Plant Physiol. Biochem.* 82, 44–53. doi: 10.1016/j.plaphy.2014.05.007
- Majumdar, S., and Chakraborty, U. (2015). Phosphate solubilizing rhizospheric *Pantoea agglomerans* Acti-3 promotes growth in jute plants. *World J. Agric. Sci.* 11, 401–410. doi: 10.5829/idosi.wjas.2015.11.6.1893
- Maleki, M., Mokhtarnejad, L., and Mostafae, S. (2011). Screening of rhizobacteria for biological control of cucumber root and crown rot caused by *Phytophthora drechsleri*. *Plant Pathol. J.* 27, 78–84. doi: 10.5423/PPJ.2011.27.1.078
- Mehnaz, S., Baig, D. N., and Lazarovits, G. (2010). Genetic and phenotypic diversity of plant growth promoting rhizobacteria isolated from sugarcane plants growing in Pakistan. *J. Microbiol. Biotechnol.* 20, 1614–1623. doi: 10.4014/jmb.1005.05014
- Mhatre, M., Srinivas, L., and Ganapathi, T. R. (2011). Enhanced iron and zinc accumulation in genetically engineered pineapple plants using soybean Ferritin gene. *Biol. Trace Elem. Res.* 144, 1219–1228. doi: 10.1007/s12011-011-9092-z
- Miller, R. L., and Higgins, V. J. (1970). Association of cyanide with infection of birdsfoot trefoil by *Stemphylium loti*. *Phytopathology* 60, 104–110. doi: 10.1094/Phyto-60-104
- Mirza, F. M., Najam, N., Mehdi, M., and Ahmad, B. (2015). Determinants of technical efficiency of wheat farms in Pakistan. *Pak. J. Agri. Sci.* 52, 565–570.
- Mohite, B. (2013). Isolation and characterization of indole acetic acid (IAA) producing bacteria from rhizospheric soil and its effect on plant growth. *J. Soil Sci. Plant Nutr.* 13, 638–649. doi: 10.4067/S0718-95162013005000051
- Nautiyal, C. S. (1999). An efficient microbiological growth medium for screening phosphate solubilizing microorganisms. *FEMS Microbiol. Lett.* 170, 265–270. doi: 10.1111/j.1574-6968.1999.tb13383.x
- Naz, I., Ahmad, H., Khokhar, S. N., Khan, K., and Shah, A. H. (2016). Impact of zinc solubilizing bacteria on zinc contents of wheat. *Am. Euras. J. Agric. Environ. Sci.* 16, 449–454. doi: 10.5829/idosi.aejas.2016.16.3.12886
- Oteino, N., Lally, R. D., Kiwanuka, S., Lloyd, A., Ryan, D., Germaine, K. J., et al. (2015). Plant growth promotion induced by phosphate solubilizing endophytic *Pseudomonas* isolates. *Front. Microbiol.* 6:745. doi: 10.3389/fmicb.2015.00745
- Pawar, A., Ismail, S., Mundhe, S., and Patil, V. D. (2015). Solubilization of insoluble zinc compounds by different microbial isolates in vitro condition. *Int. J. Trop. Agric.* 33, 865–869.
- Perez-Miranda, S., Cabirol, N., George-Tellez, R., Zamudio-Rivera, L. S., and Fernandez, F. J. (2007). O-CAS, a fast and universal method for siderophore detection. *J. Microbiol. Methods* 70, 127–131. doi: 10.1016/j.mimet.2007.03.023
- Ramesh, A., Sharma, S. K., Sharma, M. P., Yadav, N., and Joshi, O. P. (2014). Inoculation of zinc solubilizing *Bacillus aryabhatai* strains for improved growth, mobilization and biofortification of zinc in soybean and wheat cultivated in vertisols of central India. *Agric. Ecosyst. Environ. Appl. Soil Ecol.* 73, 87–96. doi: 10.1016/j.apsoil.2013.08.009
- Rasul, G., Mirza, M. S., Latif, F., and Malik, K. A. (1998). “Identification of plant growth hormones produced by bacterial isolates from rice, wheat and kallar grass,” in *Nitrogen Fixation with Non-legumes*, eds K. A. Malik, M. S. Mirza, and J. K. Ladha (Dordrecht: Kluwer Academic Publishers), 25–37.
- Rattan, R. K., and Shukla, L. M. (1991). Influence of different zinc carriers on the utilization of micronutrients by rice. *J. Indian Soc. Soil Sci.* 39, 808–810.
- Reetha, S., Bhuvanawari, G., Thamizhiniyan, P., and Mycin, T. R. (2014). Isolation of indole acetic acid (IAA) producing rhizobacteria of *Pseudomonas fluorescens* and *Bacillus subtilis* and enhance growth of onion (*Allium cepa* L.). *Int. J. Curr. Microbiol. App. Sci.* 3, 568–574.
- Saravanan, V. S., Madhaiyan, M., and Thangaraju, M. (2007). Solubilization of zinc compounds by the diazotrophic, plant growth promoting bacterium *Gluconacetobacter diazotrophicus*. *Chemosphere* 66, 1794–1798. doi: 10.1016/j.chemosphere.2006.07.067
- Saravanan, V. S., Kumar, M. R., and Sa, T. M. (2011). “Microbial zinc solubilization and their role on plants,” in *Bacteria in Agrobiology: Plant Nutrient Management*, ed D. K. Maheshwari (Berlin: Springer), 47–63.
- Schwyn, B., and Neilands, J. B. (1987). Universal chemical assay for the detection and determination of siderophores. *Anal. Biochem.* 160, 47–56. doi: 10.1016/0003-2697(87)90612-9
- Selvakumar, G., Joshi, P., Nazim, S., Mishra, P. K., Bisht, J. K., and Gupta, H. S. (2009). Phosphate solubilization and growth promotion by *Pseudomonas fragi* CS11RH1 (MTCC 8984), a psychrotolerant bacterium isolated from a high altitude Himalayan rhizosphere. *Biologia* 64, 239–245. doi: 10.2478/s11756-009-0041-7
- Sharma, S. K., Sharma, M. P., Ramesh, A., and Joshi, O. P. (2012). Characterization of zinc solubilizing *Bacillus* isolates and their potential to influence zinc assimilation in soybean seeds. *J. Microbiol. Biotechnol.* 22, 352–359. doi: 10.4014/jmb.1106.05063
- Sierra, G. (1957). A simple method for the detection of lipolytic activity of micro-organisms and some observations on the influence of the contact between cells and fatty acid substrates. *Anton. Leeuw. Int. J. G.* 23, 15–22. doi: 10.1007/BF02545855
- Tan, S., Han, R., Li, P., Yang, G., Li, S., Zhang, P., et al. (2015). Over-expression of the MxIRT1 gene increases iron and zinc content in rice seeds. *Transgenic Res.* 24, 109–122. doi: 10.1007/s11248-014-9822-z
- Tan, Z. Y., Xu, X. D., Wang, E. T., Gao, J. I., Romero, E. M., and Chen, W. X. (1997). Phylogenetic and genetic relationships of *Mesorhizobium tinshanense* and related rhizobia. *Int. J. Syst. Bacteriol.* 47, 874–879. doi: 10.1099/00207713-47-3-874
- Tank, N., and Saraf, M. (2009). Enhancement of plant growth and decontamination of nickel-spiked soil using PGPR. *J. Basic Microbiol.* 49, 195–204. doi: 10.1002/jobm.200800090
- Tavallali, V., Rahemi, M., Eshghi, S., Kholdebarin, B., and Ramezani, A. (2010). Zinc alleviates salt stress and increases antioxidant enzyme activity in the leaves of pistachio (*Pistacia vera* L. ‘Badami’) seedlings. *Turk. J. Agr. Forest.* 34, 349–359. doi: 10.3906/tar-0905-10

- Tien, T. M., Gaskins, M. H., and Hubbel, D. H. (1979). Plant growth substances produced by *Azospirillum brasilense* and their effect on the growth of pearl millet (*Pennisetum americanum* L.). *Appl. Environ. Microbiol.* 37, 1016–1027.
- Vaid, S. K., Kumar, B., Sharma, A., Shukla, A. K., and Srivastava, P. C. (2014). Effect of zinc solubilizing bacteria on growth promotion and zinc nutrition of rice. *J. Soil Sci. Plant Nut.* 14, 889–910. doi: 10.4067/S0718-95162014005000071
- Verma, P., Yadav, A. N., Khannam, K. S., Panjiar, N., Kumar, S., Saxena, A. K., et al. (2015). Assessment of genetic diversity and plant growth promoting attributes of psychrotolerant bacteria allied with wheat (*Triticum aestivum*) from the northern hills zone of India. *Ann. Microbiol.* 65, 1885–1899. doi: 10.1007/s13213-014-1027-4
- Vincent, J. M. (1970). *A Manual for the Practical Study of the Root-nodule Bacteria*. Great Britain: Burgess and Son Ltd.
- Wakatsuki, T. (1995). Metal oxidoreduction by microbial cells. *J. Ind. Microbiol.* 14, 169–177. doi: 10.1007/BF01569900
- Wang, Y., Yang, X., Zhang, X., Dong, L., Zhang, J., Wei, Y., et al. (2014). Improved plant growth and Zn accumulation in grains of rice (*Oryza sativa* L.) by inoculation of endophytic microbes isolated from a Zn hyperaccumulator, *Sedum alfredii* H. J. *Agric. Food Chem.* 62, 1783–1791. doi: 10.1021/jf404152u
- Weaver, P. F., Wall, J. D., and Gest, H. (1975). Characterization of *Rhodopseudomonas capsulata*. *Arch. Microbiol.* 105, 207–216.
- White, P. J., and Broadly, M. R. (2005). Biofortifying crops with essential mineral elements. *Trends Plant Sci.* 10, 586–593. doi: 10.1016/j.tplants.2005.10.001
- Zuo, Y., and Zhang, F. (2009). Iron and zinc biofortification strategies in dicot plants by intercropping with gramineous species. A review. *Agron. Sustain. Dev.* 29, 63–71. doi: 10.1051/agro:2008055

**Conflict of Interest Statement:** The authors declare that the research was conducted in the absence of any commercial or financial relationships that could be construed as a potential conflict of interest.

Copyright © 2017 Kamran, Shahid, Baig, Rizwan, Malik and Mehnaz. This is an open-access article distributed under the terms of the Creative Commons Attribution License (CC BY). The use, distribution or reproduction in other forums is permitted, provided the original author(s) or licensor are credited and that the original publication in this journal is cited, in accordance with accepted academic practice. No use, distribution or reproduction is permitted which does not comply with these terms.