

Acta Crystallographica Section E

Structure Reports

Online

ISSN 1600-5368

Editors: W.T.A. Harrison, J. Simpson and  
M. Weil

## *N'*-[(*E*)-(5-Methylfuran-2-yl)methylidene]formohydrazide

Zahid Shafiq, Muhammad Yaqub, M. Nawaz Tahir, Mian Hasnain Nawaz  
and M. Saeed Iqbal

*Acta Cryst.* (2009). **E65**, o2495

This open-access article is distributed under the terms of the Creative Commons Attribution Licence <http://creativecommons.org/licenses/by/2.0/uk/legalcode>, which permits unrestricted use, distribution, and reproduction in any medium, provided the original authors and source are cited.



*Acta Crystallographica Section E: Structure Reports Online* is the IUCr's highly popular open-access structural journal. It provides a simple and easily accessible publication mechanism for the growing number of inorganic, metal-organic and organic crystal structure determinations. The electronic submission, validation, refereeing and publication facilities of the journal ensure very rapid and high-quality publication, whilst key indicators and validation reports provide measures of structural reliability. In 2007, the journal published over 5000 structures. The average publication time is less than one month.

Crystallography Journals **Online** is available from [journals.iucr.org](http://journals.iucr.org)

***N'*-(*E*)-(5-Methylfuran-2-yl)-  
methyldene]formohydrazide**Zahid Shafiq,<sup>a</sup> Muhammad Yaqub,<sup>a</sup> M. Nawaz Tahir,<sup>b\*</sup>  
Mian Hasnain Nawaz<sup>a</sup> and M. Saeed Iqbal<sup>c</sup><sup>a</sup>Department of Chemistry, Bahauddin Zakariya University, Multan 60800, Pakistan,<sup>b</sup>Department of Physics, University of Sargodha, Sargodha, Pakistan, and<sup>c</sup>Department of Chemistry, Government College University, Lahore, Pakistan

Correspondence e-mail: dmntahir\_uos@yahoo.com

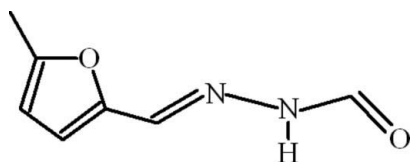
Received 12 September 2009; accepted 13 September 2009

Key indicators: single-crystal X-ray study;  $T = 296$  K; mean  $\sigma(\text{C}-\text{C}) = 0.004$  Å;  
 $R$  factor = 0.044;  $wR$  factor = 0.108; data-to-parameter ratio = 13.9.

The title compound,  $\text{C}_7\text{H}_8\text{N}_2\text{O}_2$ , is almost planar (r.m.s. deviation for non-H atoms = 0.029 Å). In the crystal, inversion dimers linked by pairs of  $\text{N}-\text{H}\cdots\text{O}$  hydrogen bonds generate an  $R_2^2(8)$  ring motif.

**Related literature**

For related structures, see: Shafiq *et al.* (2009); Bai & Jing (2007); Yao & Jing (2007). For graph-set notation, see: Bernstein *et al.* (1995).

**Experimental***Crystal data* $\text{C}_7\text{H}_8\text{N}_2\text{O}_2$  $M_r = 152.15$ Orthorhombic,  $Pbca$  $a = 10.6433$  (14) Å $b = 6.7762$  (8) Å $c = 21.129$  (3) Å $V = 1523.9$  (3) Å<sup>3</sup> $Z = 8$ Mo  $K\alpha$  radiation $\mu = 0.10$  mm<sup>-1</sup> $T = 296$  K

0.25 × 0.15 × 0.13 mm

*Data collection*Bruker Kappa APEXII CCD  
diffractometerAbsorption correction: multi-scan  
(*SADABS*; Bruker, 2005) $T_{\min} = 0.985$ ,  $T_{\max} = 0.988$ 

7485 measured reflections

1403 independent reflections

655 reflections with  $I > 2\sigma(I)$  $R_{\text{int}} = 0.072$ *Refinement* $R[F^2 > 2\sigma(F^2)] = 0.044$  $wR(F^2) = 0.108$  $S = 1.00$ 

1403 reflections

101 parameters

H-atom parameters constrained

 $\Delta\rho_{\text{max}} = 0.12$  e Å<sup>-3</sup> $\Delta\rho_{\text{min}} = -0.16$  e Å<sup>-3</sup>**Table 1**

Hydrogen-bond geometry (Å, °).

$D-H\cdots A$	$D-H$	$H\cdots A$	$D\cdots A$	$D-H\cdots A$
$\text{N2}-\text{H2A}\cdots\text{O2}^i$	0.86	2.00	2.848 (3)	169

Symmetry code: (i)  $-x + 1, -y + 2, -z$ .

Data collection: *APEX2* (Bruker, 2007); cell refinement: *SAINT* (Bruker, 2007); data reduction: *SAINT*; program(s) used to solve structure: *SHELXS97* (Sheldrick, 2008); program(s) used to refine structure: *SHELXL97* (Sheldrick, 2008); molecular graphics: *ORTEP-3 for Windows* (Farrugia, 1997) and *PLATON* (Spek, 2009); software used to prepare material for publication: *WinGX* (Farrugia, 1999) and *PLATON*.

The authors acknowledge the Higher Education Commission, Islamabad, Pakistan, and Bana International, Karachi, Pakistan, for funding the purchase of the diffractometer at GCU, Lahore and for technical support, respectively.

Supplementary data and figures for this paper are available from the IUCr electronic archives (Reference: HB5099).

**References**

- Bai, Z.-C. & Jing, Z.-L. (2007). *Acta Cryst.* **E63**, o3822.  
 Bernstein, J., Davis, R. E., Shimon, L. & Chang, N.-L. (1995). *Angew. Chem. Int. Ed. Engl.* **34**, 1555-1573.  
 Bruker (2005). *SADABS*. Bruker AXS Inc., Madison, Wisconsin, USA.  
 Bruker (2007). *APEX2* and *SAINT*. Bruker AXS Inc., Madison, Wisconsin, USA.  
 Farrugia, L. J. (1997). *J. Appl. Cryst.* **30**, 565.  
 Farrugia, L. J. (1999). *J. Appl. Cryst.* **32**, 837-838.  
 Shafiq, Z., Yaqub, M., Tahir, M. N., Nawaz, M. H. & Iqbal, M. S. (2009). *Acta Cryst.* **E65**, o2494.  
 Sheldrick, G. M. (2008). *Acta Cryst.* **A64**, 112-122.  
 Spek, A. L. (2009). *Acta Cryst.* **D65**, 148-155.  
 Yao, X.-L. & Jing, Z.-L. (2007). *Acta Cryst.* **E63**, o3900.

**supplementary materials**

*Acta Cryst.* (2009). E65, o2495 [ doi:10.1107/S1600536809037064 ]

## *N*'-[(*E*)-(5-Methylfuran-2-yl)methylidene]formohydrazide

Z. Shafiq, M. Yaqub, M. N. Tahir, M. H. Nawaz and M. S. Iqbal

### Comment

In continuation of our studies of different derivatives of formohydrazide (Shafiq *et al.*, 2009), the title compound (I, Fig. 1), has been prepared and being reported. The metal complexes of (I) has been prepared with transition metals and their various studies are in progress.

The crystal structures of (II) (*E*)-4-bromo-*N*'-((5-methylfuran-2-yl)methylene)benzohydrazide (Bai & Jing, 2007), (III) (*E*)-*N*'-((5-methylfuran-2-yl)methylene)furan-2-carbohydrazide (Yao & Jing, 2007) have been reported which contain the 5-methylfuran-2-yl moiety as present in (I). The title compound consists of dimers due to intermolecular H-bonding of type N—H...O (Table 1, Fig. 2) forming  $R_2^2(8)$  (Bernstein *et al.*, 1995) ring motif. Similar bonding also exist in *N*'-[(1*E*)-1-(4-Chlorophenyl)ethylidene]formohydrazide (Shafiq *et al.*, 2009). The overall molecule of (I) is planar with an r.m.s. deviation of 0.0285 Å.

### Experimental

To a hot stirred solution of formohydrazide (1.0 g, 0.017 mol) in ethanol (10 ml) was added 5-methylfurfural (1.65 ml, 0.017 mol). The resultant mixture was then heated under reflux for 4 h and monitored through TLC. After completion of reaction, the mixture was cooled to room temperature. The crude solid was collected by suction filtration. The precipitates were washed with hot ethanol, filtered and dried. Brown needles of (I) were obtained by recrystallization from (1:1 v/v) methanol:1,4-dioxan.

### Refinement

The H-atoms were positioned geometrically with N—H = 0.86, C—H = 0.93 and 0.96 Å for aryl and methyl H atoms, respectively and constrained to ride on their parent atoms, with  $U_{\text{iso}}(\text{H}) = xU_{\text{eq}}(\text{C}, \text{N})$ , where  $x = 1.5$  for methyl H and  $x = 1.2$  for all other H atoms.

### Figures

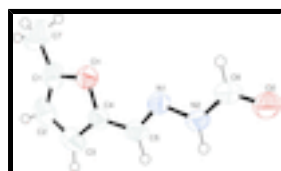


Fig. 1. View of (I) with displacement ellipsoids drawn at the 50% probability level. H-atoms are shown by small circles of arbitrary radius.

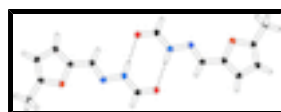


Fig. 2. The partial packing of (I) which shows that molecules are dimerized and form ring motifs.

## *N*'-[(*E*)-(5-methylfuran-2-yl)methylidene]formohydrazide

### Crystal data

$C_7H_8N_2O_2$	$F_{000} = 640$
$M_r = 152.15$	$D_x = 1.326 \text{ Mg m}^{-3}$
Orthorhombic, <i>Pbca</i>	Mo <i>K</i> $\alpha$ radiation, $\lambda = 0.71073 \text{ \AA}$
Hall symbol: -P 2ac 2ab	Cell parameters from 1864 reflections
$a = 10.6433 (14) \text{ \AA}$	$\theta = 2.7\text{--}25.5^\circ$
$b = 6.7762 (8) \text{ \AA}$	$\mu = 0.10 \text{ mm}^{-1}$
$c = 21.129 (3) \text{ \AA}$	$T = 296 \text{ K}$
$V = 1523.9 (3) \text{ \AA}^3$	Cut needle, brown
$Z = 8$	$0.25 \times 0.15 \times 0.13 \text{ mm}$

### Data collection

Bruker Kappa APEXII CCD diffractometer	1403 independent reflections
Radiation source: fine-focus sealed tube	655 reflections with $I > 2\sigma(I)$
Monochromator: graphite	$R_{\text{int}} = 0.072$
Detector resolution: $7.80 \text{ pixels mm}^{-1}$	$\theta_{\text{max}} = 25.5^\circ$
$T = 296 \text{ K}$	$\theta_{\text{min}} = 2.7^\circ$
$\omega$ scans	$h = -12 \rightarrow 12$
Absorption correction: multi-scan (SADABS; Bruker, 2005)	$k = -5 \rightarrow 8$
$T_{\text{min}} = 0.985$ , $T_{\text{max}} = 0.988$	$l = -23 \rightarrow 25$
7485 measured reflections	

### Refinement

Refinement on $F^2$	Secondary atom site location: difference Fourier map
Least-squares matrix: full	Hydrogen site location: inferred from neighbouring sites
$R[F^2 > 2\sigma(F^2)] = 0.044$	H-atom parameters constrained
$wR(F^2) = 0.108$	$w = 1/[\sigma^2(F_o^2) + (0.0376P)^2]$
$S = 1.00$	where $P = (F_o^2 + 2F_c^2)/3$
1403 reflections	$(\Delta/\sigma)_{\text{max}} < 0.001$
101 parameters	$\Delta\rho_{\text{max}} = 0.12 \text{ e \AA}^{-3}$
Primary atom site location: structure-invariant direct methods	$\Delta\rho_{\text{min}} = -0.16 \text{ e \AA}^{-3}$
	Extinction coefficient: ?

*Special details*

**Geometry.** Bond distances, angles *etc.* have been calculated using the rounded fractional coordinates. All su's are estimated from the variances of the (full) variance-covariance matrix. The cell e.s.d.'s are taken into account in the estimation of distances, angles and torsion angles

**Refinement.** Refinement of  $F^2$  against ALL reflections. The weighted  $R$ -factor  $wR$  and goodness of fit  $S$  are based on  $F^2$ , conventional  $R$ -factors  $R$  are based on  $F$ , with  $F$  set to zero for negative  $F^2$ . The threshold expression of  $F^2 > \sigma(F^2)$  is used only for calculating  $R$ -factors(gt) *etc.* and is not relevant to the choice of reflections for refinement.  $R$ -factors based on  $F^2$  are statistically about twice as large as those based on  $F$ , and  $R$ -factors based on ALL data will be even larger.

*Fractional atomic coordinates and isotropic or equivalent isotropic displacement parameters ( $\text{\AA}^2$ )*

	<i>x</i>	<i>y</i>	<i>z</i>	$U_{\text{iso}}^*/U_{\text{eq}}$
O1	0.56771 (16)	0.2958 (2)	0.15544 (8)	0.0550 (7)
O2	0.66434 (16)	1.0759 (3)	0.01153 (9)	0.0665 (8)
N1	0.5699 (2)	0.6414 (3)	0.08604 (10)	0.0486 (8)
N2	0.56384 (19)	0.8059 (3)	0.04784 (10)	0.0497 (8)
C1	0.5376 (3)	0.1184 (4)	0.18332 (14)	0.0602 (11)
C2	0.4218 (3)	0.0664 (4)	0.16579 (15)	0.0717 (14)
C3	0.3762 (3)	0.2130 (4)	0.12461 (15)	0.0641 (11)
C4	0.4667 (2)	0.3504 (4)	0.11942 (12)	0.0481 (10)
C5	0.4735 (2)	0.5290 (4)	0.08350 (13)	0.0501 (10)
C6	0.6618 (2)	0.9277 (4)	0.04483 (14)	0.0542 (11)
C7	0.6371 (3)	0.0296 (4)	0.22318 (15)	0.0950 (16)
H2	0.37892	-0.04640	0.17850	0.0858*
H2A	0.49724	0.82967	0.02609	0.0596*
H3	0.29823	0.21455	0.10475	0.0770*
H5	0.40630	0.56423	0.05772	0.0599*
H6	0.73203	0.89887	0.06930	0.0651*
H7A	0.61090	-0.09910	0.23690	0.1421*
H7B	0.71316	0.01834	0.19904	0.1421*
H7C	0.65168	0.11181	0.25943	0.1421*

*Atomic displacement parameters ( $\text{\AA}^2$ )*

	$U^{11}$	$U^{22}$	$U^{33}$	$U^{12}$	$U^{13}$	$U^{23}$
O1	0.0546 (12)	0.0537 (12)	0.0566 (13)	-0.0005 (9)	0.0025 (11)	0.0096 (10)
O2	0.0620 (14)	0.0531 (12)	0.0845 (17)	-0.0070 (9)	-0.0148 (11)	0.0163 (11)
N1	0.0461 (14)	0.0486 (13)	0.0510 (16)	0.0081 (12)	0.0010 (12)	0.0037 (12)
N2	0.0408 (13)	0.0512 (13)	0.0570 (16)	0.0048 (12)	-0.0071 (12)	0.0094 (12)
C1	0.074 (2)	0.0447 (18)	0.062 (2)	0.0016 (16)	0.0148 (19)	0.0060 (16)
C2	0.080 (2)	0.054 (2)	0.081 (3)	-0.0146 (18)	0.025 (2)	-0.0025 (17)
C3	0.0533 (19)	0.068 (2)	0.071 (2)	-0.0095 (17)	0.0073 (17)	-0.0096 (18)
C4	0.0415 (16)	0.0546 (19)	0.0483 (19)	0.0013 (15)	0.0047 (14)	-0.0011 (15)
C5	0.0416 (16)	0.0567 (18)	0.052 (2)	0.0088 (14)	-0.0007 (14)	0.0003 (15)
C6	0.0454 (18)	0.0562 (18)	0.061 (2)	0.0042 (15)	-0.0088 (16)	-0.0033 (17)

# supplementary materials

C7                    0.116 (3)                    0.081 (2)                    0.088 (3)                    0.018 (2)                    -0.004 (2)                    0.031 (2)

## Geometric parameters (Å, °)

O1—C1	1.377 (3)	C3—C4	1.344 (4)
O1—C4	1.368 (3)	C4—C5	1.430 (4)
O2—C6	1.227 (3)	C2—H2	0.9300
N1—N2	1.378 (3)	C3—H3	0.9300
N1—C5	1.279 (3)	C5—H5	0.9300
N2—C6	1.331 (3)	C6—H6	0.9300
N2—H2A	0.8600	C7—H7A	0.9600
C1—C2	1.334 (4)	C7—H7B	0.9600
C1—C7	1.481 (4)	C7—H7C	0.9600
C2—C3	1.407 (4)		
O1...N1	2.763 (3)	C6...N1 <sup>i</sup>	3.318 (3)
O2...N1 <sup>i</sup>	3.268 (3)	C6...C1 <sup>iv</sup>	3.461 (4)
O2...N2 <sup>ii</sup>	2.848 (3)	C6...O2 <sup>iii</sup>	3.099 (3)
O2...C6 <sup>i</sup>	3.099 (3)	C1...H7A <sup>vii</sup>	3.0000
O1...H6 <sup>iii</sup>	2.8900	C2...H7A <sup>vii</sup>	3.0800
O2...H2A <sup>ii</sup>	2.0000	C6...H2A <sup>ii</sup>	2.8000
O2...H6 <sup>i</sup>	2.7400	H2A...H5	2.1500
N1...O1	2.763 (3)	H2A...O2 <sup>ii</sup>	2.0000
N1...O2 <sup>iii</sup>	3.268 (3)	H2A...C6 <sup>ii</sup>	2.8000
N1...C6 <sup>iii</sup>	3.318 (3)	H2A...H2A <sup>ii</sup>	2.5600
N2...C2 <sup>iv</sup>	3.408 (4)	H5...H2A	2.1500
N2...O2 <sup>ii</sup>	2.848 (3)	H6...O1 <sup>i</sup>	2.8900
N1...H6 <sup>iii</sup>	2.7000	H6...O2 <sup>iii</sup>	2.7400
C1...C6 <sup>v</sup>	3.461 (4)	H6...N1 <sup>i</sup>	2.7000
C2...N2 <sup>v</sup>	3.408 (4)	H7A...C1 <sup>viii</sup>	3.0000
C5...C5 <sup>vi</sup>	3.595 (4)	H7A...C2 <sup>viii</sup>	3.0800
C1—O1—C4	106.9 (2)	C1—C2—H2	126.00
N2—N1—C5	114.8 (2)	C3—C2—H2	126.00
N1—N2—C6	119.5 (2)	C2—C3—H3	127.00
N1—N2—H2A	120.00	C4—C3—H3	127.00
C6—N2—H2A	120.00	N1—C5—H5	119.00
C2—C1—C7	135.3 (3)	C4—C5—H5	119.00
O1—C1—C2	109.1 (2)	O2—C6—H6	118.00
O1—C1—C7	115.6 (2)	N2—C6—H6	118.00
C1—C2—C3	107.7 (3)	C1—C7—H7A	109.00
C2—C3—C4	107.0 (3)	C1—C7—H7B	109.00
O1—C4—C5	119.0 (2)	C1—C7—H7C	109.00
O1—C4—C3	109.3 (2)	H7A—C7—H7B	109.00
C3—C4—C5	131.7 (2)	H7A—C7—H7C	109.00
N1—C5—C4	121.5 (2)	H7B—C7—H7C	110.00
O2—C6—N2	123.5 (2)		

C4—O1—C1—C2	-0.7 (3)	O1—C1—C2—C3	0.9 (3)
C4—O1—C1—C7	178.2 (2)	C7—C1—C2—C3	-177.7 (3)
C1—O1—C4—C3	0.2 (3)	C1—C2—C3—C4	-0.7 (4)
C1—O1—C4—C5	-178.5 (2)	C2—C3—C4—O1	0.3 (3)
C5—N1—N2—C6	-177.0 (2)	C2—C3—C4—C5	178.8 (3)
N2—N1—C5—C4	178.7 (2)	O1—C4—C5—N1	-2.4 (4)
N1—N2—C6—O2	179.2 (2)	C3—C4—C5—N1	179.2 (3)

Symmetry codes: (i)  $-x+3/2, y+1/2, z$ ; (ii)  $-x+1, -y+2, -z$ ; (iii)  $-x+3/2, y-1/2, z$ ; (iv)  $x, y+1, z$ ; (v)  $x, y-1, z$ ; (vi)  $-x+1, -y+1, -z$ ; (vii)  $-x+1, y+1/2, -z+1/2$ ; (viii)  $-x+1, y-1/2, -z+1/2$ .

Hydrogen-bond geometry ( $\text{\AA}, ^\circ$ )

$D-H\cdots A$	$D-H$	$H\cdots A$	$D\cdots A$	$D-H\cdots A$
N2—H2A $\cdots$ O2 <sup>ii</sup>	0.86	2.00	2.848 (3)	169

Symmetry codes: (ii)  $-x+1, -y+2, -z$ .



Fig. 1

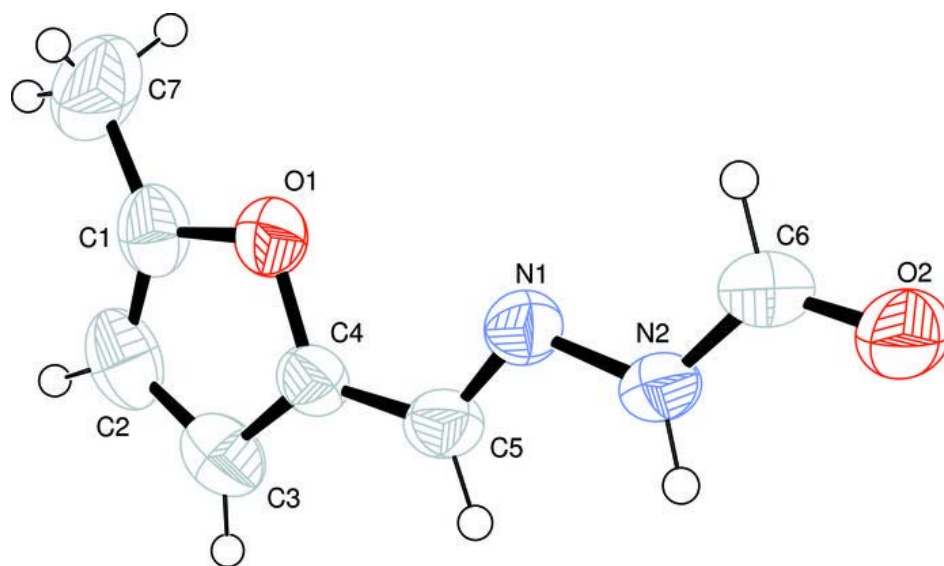


Fig. 2

